

A Public Education Partnership with the Kaiser Family Foundation and *SELF* magazine
A National Survey of Women About Their Sexual Health

> **take charge of your sexual health**

SUMMER 2003



SELF

THE HENRY J.
KAISER
FAMILY
FOUNDATION

Primary Authors

Tina Hoff

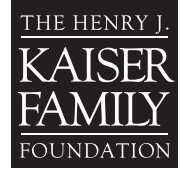
Andrea Miller

Jennifer Barefoot

Liberty Greene

Appreciation also goes to Mary McIntosh, Ph.D. and Jean D'Amico of Princeton Survey Research Associates and Melissa Moore of the Kaiser Media Research Project.

SELF



A Public Education Partnership between the
Kaiser Family Foundation and *SELF* magazine

National Survey of Women About Their Sexual Health

Take Charge of Your Sexual Health

TABLE OF CONTENTS

CONTENTS

KEY FINDINGS: STDS AND HIV	2
STIGMA AND SILENCE	2
KNOWLEDGE GAPS	2
CONFUSION ABOUT TESTING	3
LIMITED PERSONAL CONCERN	3
KEY FINDINGS: CONTRACEPTION	3
CONDOM CONTRADICTIONS	3
PILL MISPERCEPTIONS	3
SURVEY SUMMARY	4
I. SEXUAL HEALTH CONCERNS	4
II. THE SILENCE AROUND SEXUAL HEALTH ISSUES	6
CONVERSATIONS WITH HEALTH CARE PROVIDERS	6
COMMUNICATING WITH PARTNERS	8
III. KNOWLEDGE ABOUT HIV/AIDS AND OTHER STDS	9
STD TRANSMISSION AND SYMPTOMS	10
CONSEQUENCES OF STDS	11
TESTING FOR HIV AND OTHER STDS	12
THE PAP TEST	13
IV. CONTRACEPTIVE CHOICES AND PRACTICES	13
ATTITUDES ABOUT THE PILL, CONDOMS, AND UNINTENDED PREGNANCY	14
CONDOM USE	15
EMERGENCY CONTRACEPTION AWARENESS AND USE	16
METHODOLOGY	17
ENDNOTES	18
APPENDIX: QUESTIONNAIRE AND DETAILED FINDINGS	20

Do I need to worry about STDs and HIV – and how do I protect myself? Which method of birth control is right for me? Will I get pregnant? Are children in my future? What should I discuss with my doctor and my partner? These are important questions that almost every woman will face at some point in her life. And how she answers them can make a big difference for her health and well-being.

Consider these facts: At least one in four Americans will contract an STD, including HIV, in their lifetime.¹ Many STDs have no symptoms, but these infections – if left untreated – can have long-term health consequences for women, including infertility, pregnancy complications, chronic diseases such as cancer, and even death. Almost half of the 6.3 million pregnancies in the U.S. each year are unintended, and half of those occur among women who say they were using a regular method of contraception.²

Sexual health issues are a critical part of women's health. Yet, many women don't talk about these topics with anyone – including friends, sexual partners, and health care providers – leaving important conversations neglected. Women's knowledge about sexual health can be incomplete, and their attitudes are sometimes contradictory.

Stigma. Silence. Information gaps. Misperceptions. Because they all put women's health at risk, the Henry J. Kaiser Family Foundation and *SELF* magazine teamed up to provide women with the facts and resources they need to protect themselves. To better understand what women are thinking – and doing – about their sexual health, the Foundation and *SELF* conducted a nationally representative survey of 800 women ages 18-49 about their awareness and attitudes about these issues, including whether and how they communicate with their partners and health care providers.

The survey reveals the areas in which women need the most information and support, and examines their sexual health concerns through key life stages – particularly by

age and relationship status. The results of the survey, which are outlined below, also appear in the July 2003 issue of *SELF* magazine along with a series of stories and a resource guide on sexual health – *Take Charge of Your Sexual Health*.

KEY FINDINGS: STDS AND HIV

STIGMA AND SILENCE

More than nine in 10 women agree that people often feel more embarrassed about having an STD than about other health issues, and that feeling tends to translate into silence. In fact, two-thirds of women agree that STDs are not something people talk about – even with *close* friends. Only half report having discussed HIV/AIDS or other STDs with their health care providers, far fewer than the number of women who discuss most other sexual health issues. The communication gaps are even wider with sexual partners: Only half of women have talked about HIV testing and only two in five have discussed testing for other STDs.

Women cite similar reasons for not talking about these issues with partners or providers. Top reasons include embarrassment, concern over how their provider or partner might react, and difficulty in knowing how to bring up certain subjects. Lack of information about sexual health issues is also a reason women give to explain why they sometimes avoid these discussions.

KNOWLEDGE GAPS

Almost all women know that STDs can be spread through sexual intercourse and that many people with STDs may not have any symptoms. Still, one in three women does not realize that you can be infected with some STDs without having intercourse, and 10 percent are not aware that STDs can be spread through oral sex. Almost one in six

women does not know that STDs can be spread even when symptoms are *not* present. When it comes to the consequences of STDs, the majority of women know that they can cause fertility problems as well as pregnancy complications, but two in five are not aware that STDs can cause some kinds of cancers.

CONFUSION ABOUT TESTING

Nearly two-thirds of women report having been tested for HIV, and more than half say they have been tested for other STDs. However, some women may assume they were tested – even when they may not have been. At least one in six women who report having been tested believed that it was a routine part of their gynecological exam (even though HIV tests require explicit consent and providers typically seek consent when testing for other STDs). There is also some confusion about what a Pap smear does and does not do. While more than four in five women know that a Pap primarily screens for abnormal cells that can indicate pre-cancer or cancer, two in five believe it is a test for STDs and nearly one in 10 believe it is a test for HIV or pregnancy.

LIMITED PERSONAL CONCERN

Nine out of 10 women cite STDs and HIV/AIDS as sexual health concerns, but far fewer say they are personally concerned about these issues. Fewer than half say they are *personally* concerned about HIV/AIDS or other STDs, compared with the roughly four in five who express personal concern about breast and reproductive cancers and heart disease. Women's attitudes about who they believe is more likely to be at risk for STDs may help explain this dichotomy, since nearly half of women say that STDs are not a problem if a person is "responsible."

KEY FINDINGS: CONTRACEPTION

CONDOM CONTRADICTIONS

Most women report that they have suggested using a condom with a partner. Still, more than a third of sexually active women admit that they have been in a situation when they intended to use a condom – but did not. A third have also had a partner try to talk them out of using a condom.

Some women are concerned that using a condom might convey implicit messages about their partner's – or their own – sexual history. While most women believe that a person who carries a condom looks responsible, half still feel that it also looks like that person has a lot of sexual partners. More than two in five women also report that it is embarrassing to buy condoms, even though seven in 10 women say they have done so.

PILL MISPERCEPTIONS

Oral contraceptives remain the most common method of reversible birth control among adult women,³ likely reflecting women's confidence in the pill's effectiveness at preventing pregnancy. Yet, almost ten percent of women incorrectly think that birth control pills also provide at least some protection from HIV/AIDS and other STDs.

In the past five years, more women have learned about emergency contraceptive (EC) pills, which can prevent pregnancy *after* sex. Yet, only about two-thirds of women say they are aware that there is something a woman can do in the event of contraceptive failure or unprotected sex, and barely one in 20 have ever used EC.

SURVEY SUMMARY

I. SEXUAL HEALTH CONCERNS

The majority of women equate STDs and HIV/AIDS with sexual health. About seven in 10 consider sexual function, reproductive cancers – such as uterine, cervical, or ovarian cancer – and fertility to be sexual health issues. In addition, more than half classify breast cancer and menstruation in this category (See Chart 1). How women define sexual health does not change significantly throughout their reproductive lives, except when it comes to fertility: Younger women are more likely to consider fertility a sexual health issue than older women.

When it comes to *their own* health, more women are focused on breast and reproductive cancers than on HIV/AIDS or other STDs. More than four in five say they

are concerned about breast cancer, and more than three in four say they worry about reproductive cancers as well as heart disease. In contrast, less than half of women say they are personally concerned about HIV/AIDS and other STDs and a third worry about fertility (See Chart 2). Younger women and those who are single tend to say they worry about HIV/AIDS, other STDs, and fertility somewhat more than their older or married/cohabiting counterparts.

Interestingly, the degree to which a woman feels personal concern may not necessarily reflect the likelihood that she will experience a particular sexual health problem. For example, the top two rated health concerns – breast and reproductive cancers – together account for roughly 290,000 new diseases annually,⁴ compared with the estimated 15 million new STD and HIV infections that occur each year.⁵

CHART 1
DEFINING SEXUAL HEALTH
 Percentage of *women* who consider the following to be sexual health issues

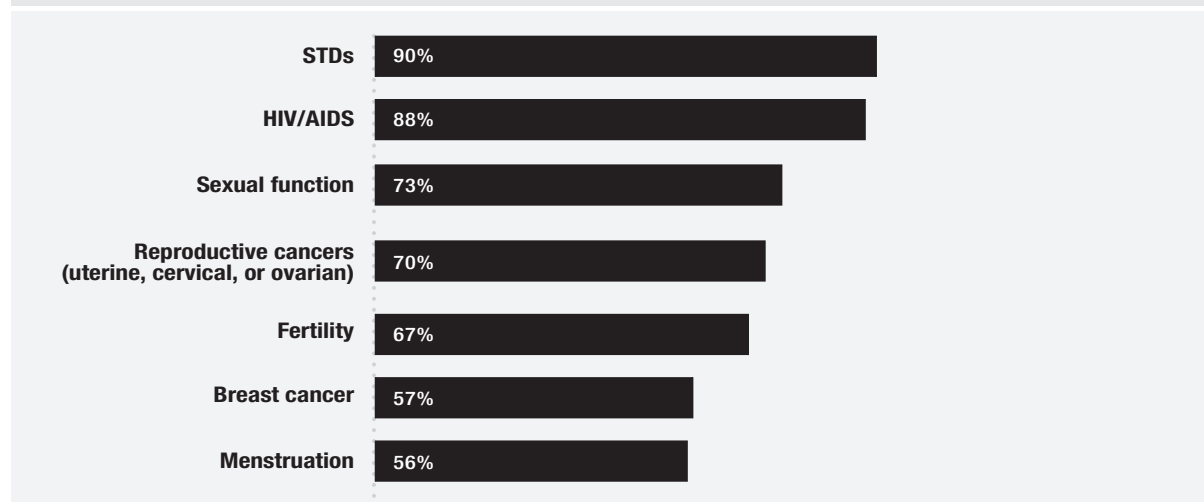
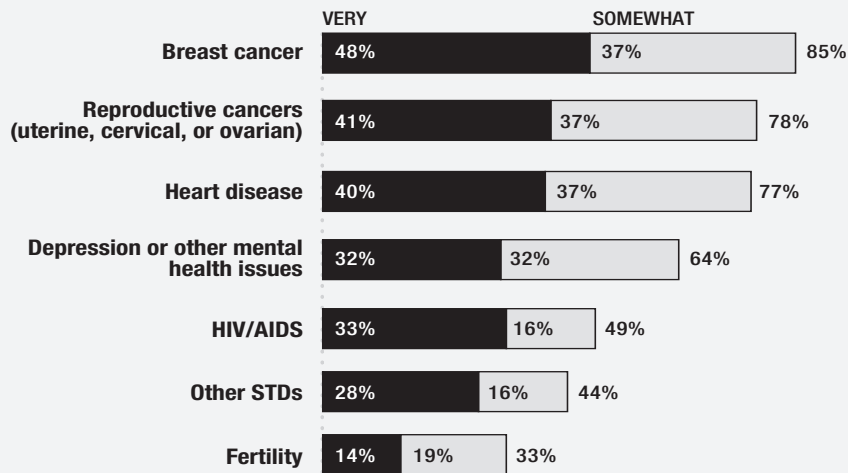


CHART 2

PERSONAL HEALTH CONCERNSPercentage of *women* who say they are concerned about

II. THE SILENCE AROUND SEXUAL HEALTH ISSUES

Despite their prevalence, STDs often invoke feelings of judgment and shame – leading many women to stay silent about them. About half of the women surveyed believe that STDs are not a problem if you are “responsible,” and more than nine in 10 women say that people feel more embarrassed about having an STD than they do about other health issues. Two-thirds agree that STDs are something that people don’t even talk about with *close friends* (See Chart 3). Single women tend to be somewhat less likely to agree with this statement than those who are married or living with someone.

CONVERSATIONS WITH HEALTH CARE PROVIDERS

About four in five women report that they routinely discuss breast self exams, birth control, and weight and physical activity with their health care providers. Almost three-quarters say they have talked about their sexual history or mammograms, with the latter conversations increasing significantly as a woman ages. In contrast, about half have discussed HIV/AIDS or other STDs, with younger women and those who are single more likely to have done so. Overall, two in five women have discussed fertility (See Chart 4).

CHART 3
STIGMA SURROUNDING SEXUAL HEALTH ISSUES
Percentage of women who agree with the following

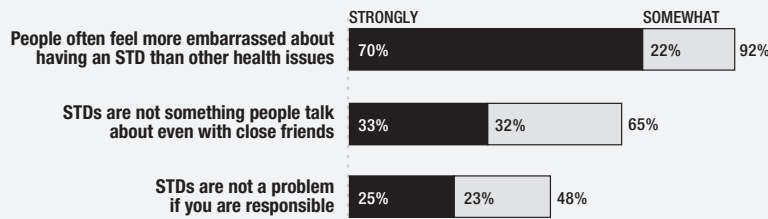
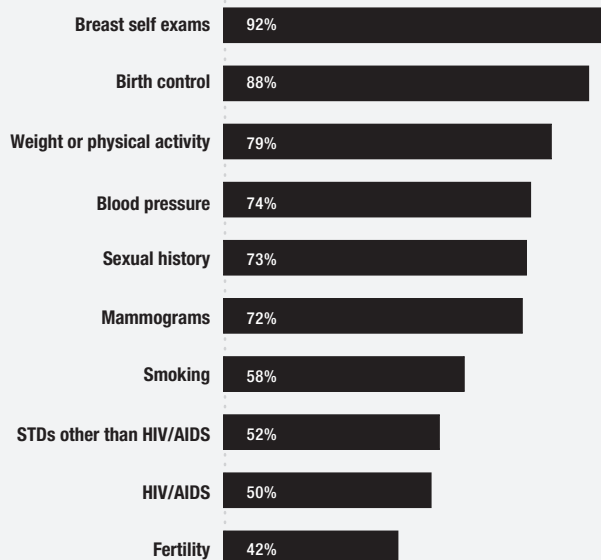


CHART 4
TALKING TO PROVIDERS
Percentage of women who say they have discussed the following with a health care provider

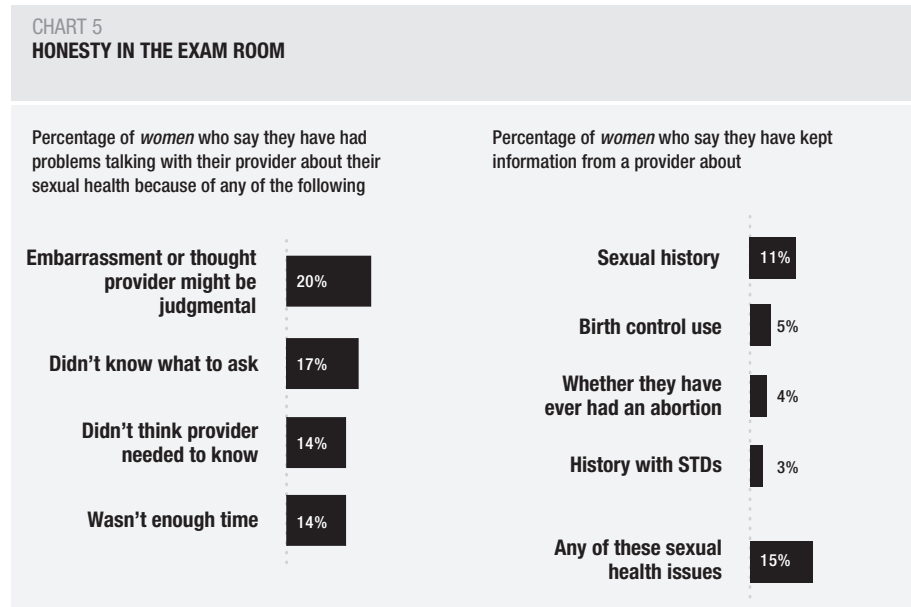


For some women, talking with a provider about sexual health can be difficult. When asked about the reasons they had problems discussing these topics, one in five cites embarrassment or fear of judgment on the part of the provider, and one in six says they didn't know what questions to ask. Fourteen percent also say there wasn't enough time or they simply didn't think their provider needed to know.

How much women are saying to their health care providers can vary significantly, depending on whether or not they are single or married/cohabiting. On average, single women are more likely to be discussing sexual health issues with their providers, reporting conversations about their sexual history, HIV/AIDS, and other STDs more than their counterparts who are married or living with someone. Single women are also more likely to say that a health care provider has advised them about STD testing.

Embarrassment or shame may mean that at least a few women haven't been completely honest at the doctor's office. Roughly one in six reports keeping information about some aspect of their sexual health from their provider, including information about their sexual history, their birth control use, whether they have ever had an abortion, or their history with STDs (See Chart 5).

At the same time, single women are also more likely to say they have had problems talking about these issues because they thought their provider might be judging them. They are also more likely to say they have not been completely honest about their sexual history.



COMMUNICATING WITH PARTNERS

Women *are* talking more with their partners about sexual health issues, at least compared to the discussions they are having with their health care providers. Yet, in both cases, HIV/AIDS and STDs remain the least talked-about subjects. There are also significant differences in what – and how – women talk about sexual health in their relationships when they are married/living together compared to when they are single. Married/cohabiting women are more likely to say they have discussed pregnancy and having children – as well as different birth control options. Single women are more likely to have discussed their sexual histories, using condoms, and getting tested for HIV and other STDs (See Chart 6).

When it comes to initiating sexual health conversations or dealing with birth control, sexually active *single* women are more likely to say that the talk – and the actions – fall to them. To be fair, these women report that between a third to half of their male partners share the responsibility for bringing up sexual histories, condom use, and STD/HIV testing – and making sure birth control is used. Yet, a sizeable number say that they – not their partners – are the initiators. And, when it comes to who *pays* for contraception, women are more likely to say they foot the bill than say that the responsibility is a shared one (See Chart 7). In contrast, women who are married or living as married are more likely to say it was no longer relevant to their lives to discuss who plays each role in their relationship or reported a more equal split of responsibility.

CHART 6

KEEPING LINES OF COMMUNICATION OPEN

Percentage of *sexually active women in relationships* who have talked about each of the following with their partner

	ALL WOMEN	MARRIED OR LIVING AS MARRIED	SINGLE
Pregnancy and having children	90%	92%	81%
Birth control options	81%	82%	75%
Sexual histories	83%	81%	91%
Using condoms	72%	69%	83%
Getting tested for HIV	51%	48%	65%
Getting tested for other STDs	40%	36%	58%

CHART 7

SEXUAL HEALTH COMMUNICATORS

Percentage of *sexually active single women* who say the role of each of the following is usually

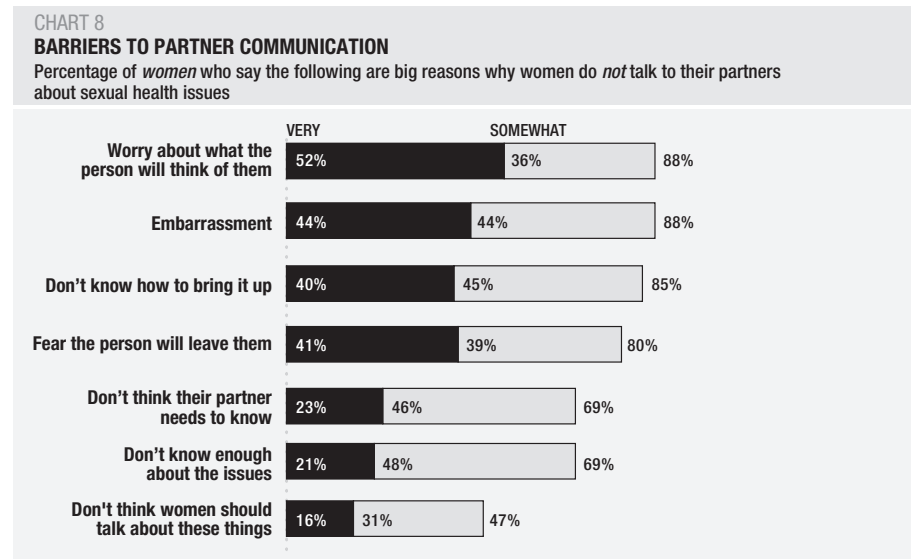
	THEMSELVES	THEIR PARTNER	SHARED
Pays for birth control	47%	7%	34%
Suggests getting tested for HIV/AIDS or other STDs	38%	0%	42%
Makes sure birth control is used	32%	1%	56%
Brings up sexual history	32%	5%	47%
Brings up using condoms	28%	6%	53%

Although many women report that they *personally* talk to their partners about sexual health issues, they also assume that women may keep some information from their partners. Nine in 10 say they believe women keep information from their partners about their sexual history at least “sometimes,” and more than four in five say women at least “sometimes” withhold information about their history with STDs. More than two-thirds also say they think the same is true about information about birth control use.

The top reasons women give for why women may not talk to their partners are a woman’s embarrassment, concern over what the other person will think, and difficulty bringing it up. Four in five say that women worry the person will leave them, seven in 10 say women don’t know enough about these issues or they don’t think their partner needs to know, and almost half think these are simply things women should not talk about (See Chart 8).

III. KNOWLEDGE ABOUT HIV/AIDS AND OTHER STDs

Close to one million people in the U.S. are living with HIV/AIDS,⁶ with approximately 40,000 new HIV infections occurring annually.⁷ Today, women represent a third of new HIV infections,⁷ yet four in five women underestimate (or do not know) the number of women affected by HIV/AIDS. Other STDs – like chlamydia, HPV, and herpes – are even more common. The most recent estimates indicate that at least one in four Americans is expected to get an STD (including HIV) in their lifetime¹ – a fact that only about one in five women recognizes.

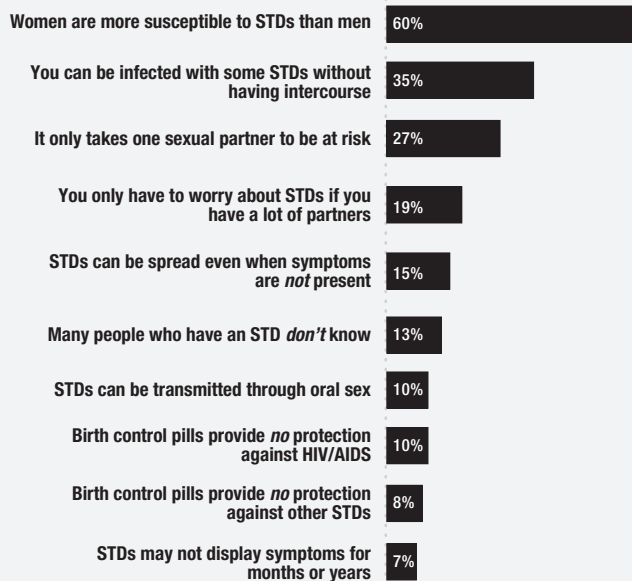


STD TRANSMISSION AND SYMPTOMS

For the most part, women are quite knowledgeable when it comes to STDs, particularly understanding the risk of transmission from certain behaviors and the asymptomatic nature of many STDs. Almost all women know that STDs are spread through intercourse and that there are treatments available. Nine in 10 women correctly say that people with STDs may not display symptoms for months or even years after infection. Most know that STDs can be spread even when symptoms are *not* present – although 15 percent do not. Seven in 10 women understand that it only takes one sexual partner to be at risk.

At the same time, women have certain misperceptions and gaps in their STD knowledge that can jeopardize their health: More than a third are not aware that you can be infected with some STDs *without* having intercourse, and almost one in five believes that you *only* have to worry about STDs if you have sex with a lot of people. One in 10 is *not* aware that STDs can be spread through oral sex, and three in five women *do not know* that women are more susceptible to STDs. Almost nine in 10 women realize that many people who have an STD don't know it, yet more than two in five also believe that you would simply “know it” if you had an STD. Almost half of the women surveyed also believe that STDs are not a problem if you are “responsible” (See Chart 9).

CHART 9

STD TRANSMISSION KNOWLEDGEPercentage of women who *do not know*

CONSEQUENCES OF STDs

Millions of people suffer from the long-term consequences of STDs, which include infertility and pregnancy-related complications as well as a variety of cancers and other chronic diseases. Women are more likely than men to experience long-term health problems due to STDs, and the effects can also be more severe and more frequent among women. For example, once infected, women are more susceptible to reproductive cancers and infertility. In fact, at least 15 percent of all infertile American women have tubal damage caused by pelvic inflammatory disease (PID), an infection that results from certain untreated STDs – primarily chlamydia and gonorrhea; PID can also increase the risk of ectopic pregnancies, which can be life-threatening. Recent studies have found that certain types of HPV cause virtually all cervical cancers worldwide, and Hepatitis B (HBV) infections – two-thirds of which are transmitted sexually – are linked to chronic liver disease, including cir-

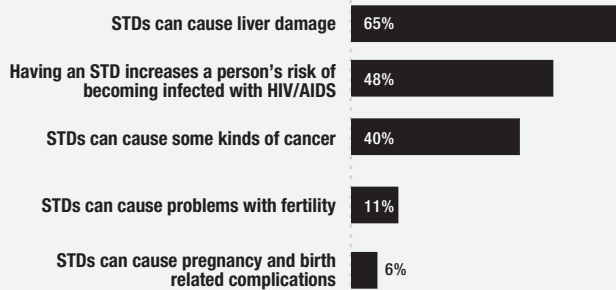
rhosis and liver cancer. STDs such as syphilis in pregnant women can seriously harm a developing fetus, and for pregnant women infected with genital herpes, there is a small chance of transmission during childbirth.⁸

Women's knowledge of the long-term consequences of STD infection is mixed. Most are aware of possible pregnancy and birth-related complications and the link between STDs and fertility problems. Fewer are aware that an STD can lead to chronic liver disease, and almost half do not know that having an STD increases a person's risk of becoming infected with HIV. Two in five are unaware that STDs can cause some kinds of cancers (See Chart 10).

CHART 10

CONSEQUENCES OF STDs

Percentage of women who do not know that



TESTING FOR HIV AND OTHER STDs

More than half of women report having been tested for an STD, although these numbers vary significantly by age – with younger women more likely to have been tested than older women. Two-thirds of women say they have been tested for HIV, with some differences by age. However, misperceptions about how tests are performed may mean that these rates overstate the actual proportion of women who have been tested.

For instance, one in five who say they have been tested for STDs also say they believed that it was a routine part of an exam – an assumption that may not hold true, depending on provider practices. One in six women who say they were tested for HIV may also be mistaken because they, too, were under the impression it was a routine part of the exam. Some women also believe that the Pap test actually

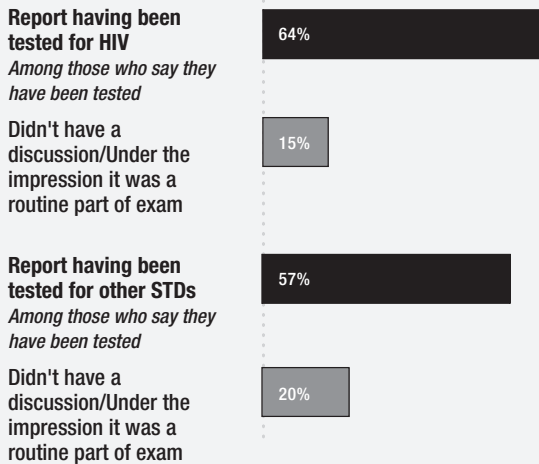
screens for STDs and HIV. To know for sure whether she has been tested, a woman must discuss the issue with her health care provider – which many do not – and give consent for HIV screening.

Women who have *not* been tested for HIV or other STDs cite a variety of reasons, with lack of personal concern topping the list. Two-thirds say they have not been tested because they do not think they are at risk, although younger women are less likely to say this than older women. The next most common reasons are: not knowing what is involved, not knowing where to go, cost, not wanting to know, and not wanting the results to appear in their medical records (See Chart 11).

**CHART 11
HIV AND STD TESTING**

Percentage of *women* who say they have discussed the following with a health care provider

Percentage of *women* who report having been tested—and those who may be mistaken



Among women who *have not been tested* the reasons why



THE PAP TEST

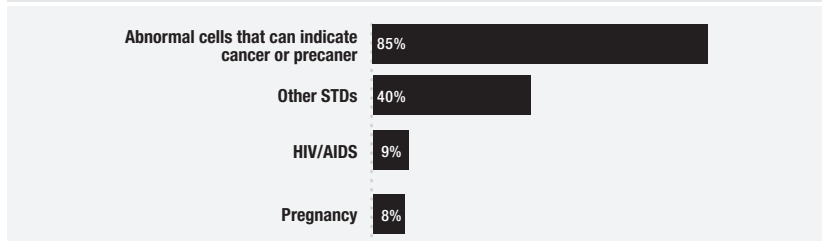
Although Pap smears have become a nearly routine part of gynecologic care, there is still a lot of confusion surrounding what the test does and does not do. More than four in five women *do* know the primary reason a Pap test is performed: to screen for abnormal cells that can indicate pre-cancer or cancer of the cervix. At the same time, however, two in five also believe it is a test for STDs other than HIV/AIDS – a misunderstanding that may reflect the fact that a few “high-risk” types of one STD (the human papillomavirus, HPV) are now known to cause virtually all cervical cancers.⁹ (The Pap does not test for HPV, but a DNA test can be performed along with it – or as a back-up to an abnormal Pap result – to determine whether a woman is infected with a high-risk HPV type.¹⁰) Finally, almost one in 10 women also believe the Pap smear is a test for HIV/AIDS or pregnancy (See Chart 12).

IV. CONTRACEPTIVE CHOICES AND PRACTICES

When it comes to choosing a method of contraception, pregnancy prevention tends to be the number one factor for most women. More than four in five also say ease of use, how well it protects against HIV/AIDS and other STDs, and their partners’ preferences are also important elements in their decision-making. For seven in 10 women, whether it interferes with intimacy is a significant consideration, while not having to discuss it matters to almost three in five. Cost also plays a role for about half of women (See Chart 13).

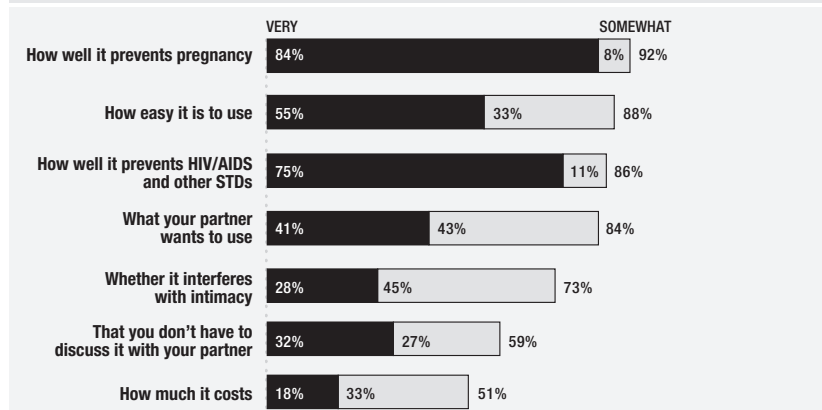
**CHART 12
THE PAP TEST**

Percentage of *women* who say a Pap smear is primarily a test for



**CHART 13
CONTRACEPTIVE CHOICES**

Percentage of *women* who say the following are important when choosing a method of contraceptive



ATTITUDES ABOUT THE PILL, CONDOMS, AND UNINTENDED PREGNANCY

Birth control pills and condoms are highly effective at preventing pregnancy when used correctly,¹¹ a fact that nine in 10 women recognize. However, women seem to feel somewhat more confident about the pregnancy protection afforded by birth control pills than by condoms: Fifty-four percent say that birth control pills are “very effective” at preventing pregnancy, and another 39 percent say they are “somewhat effective.” In contrast, 27 percent feel that condoms are “very effective” and another 63 percent say they are “somewhat effective.”

When it comes to protecting against STDs, including HIV, about nine in 10 women consider condoms to be effective, and a similar proportion recognize that birth control pills provide *no* protection against disease. Still, some women *do* believe that that “the Pill” may prevent HIV/AIDS and other STDs.

While half of the approximately 6.3 million pregnancies occurring in the U.S. each year are unintended,² a third of women think it is far fewer – and a quarter simply don’t know. Women also tend to be pretty divided when it comes to considering an unplanned pregnancy something that happens only to people who aren’t “responsible.” This is true even as nearly two-thirds of sexually active women also say they have experienced a “pregnancy scare” at some point in their lives – thinking they might be pregnant when they did not plan to be.

CONDOM USE

Although almost half of women say it is embarrassing to buy condoms, seven in 10 sexually active women say they have done so. More than a third have condoms in their home, and about one in 10 carry them when they go out. Four in five women agree that a woman – or a man – who carries a condom looks “responsible,” but about half also think someone who carries condoms has a lot of sexual partners.

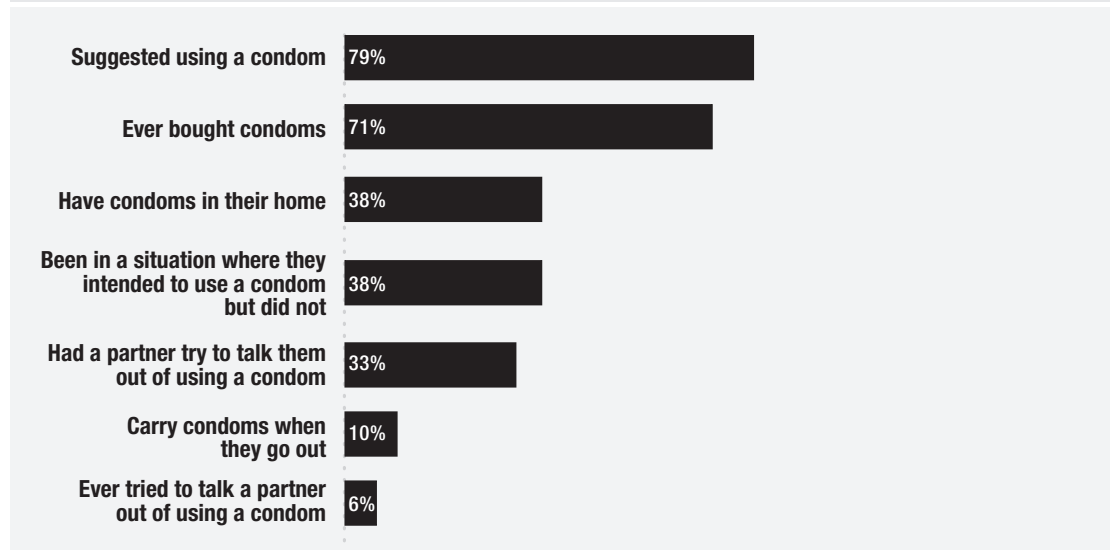
Women feel condoms can be difficult to talk about – and, sometimes, even to use. About a third agree that it is hard to bring up the subject of condoms with a partner, although four in five have suggested using one. Almost three-quarters agree that men generally think using condoms has a negative effect on their sexual experience, and a third of sexually active women have had a partner try to talk them out of using a condom. Almost two in five women say they have been in a situation when they intended to use a condom but did not (See Chart 14).

Single women are more likely to have suggested condom use with a partner, bought condoms, keep them in their homes, and carry them when they go out. They are also more comfortable buying condoms, and are more likely to say they have done so.

CHART 14

CONDOM EXPERIENCES

Percentage of *sexually active women* who report they have done the following

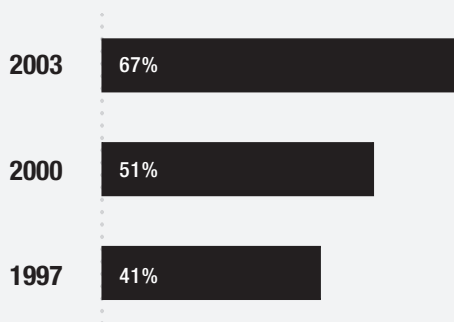


EMERGENCY CONTRACEPTION AWARENESS AND USE

Even with two dedicated emergency contraception (EC) products now on the market, women's awareness and use of this back-up birth control method remains low – particularly compared with other contraceptive options. Roughly two-thirds of women know that there is something a woman can do to prevent pregnancy in the event of contraceptive failure or unprotected sex. However, only about one in 20 women reports ever having used EC, with variations based on both age and relationship status. Younger women, and those who are single, are more likely than their older or married/cohabiting counterparts to have done so (See Chart 15 for comparisons to previous years).

CHART 15
EMERGENCY CONTRACEPTION

Percentage of *women* who know there is something a woman can do in the next few days after sex to prevent pregnancy



Percentage of *women* who have ever used emergency contraception



Data from 1997 and 2000 are among women ages 18-44. The 2000 data comes from a Vital Signs survey conducted by the Foundation with Lifetime Television and the 1997 data is from the National Survey of Americans on Emergency Contraception.

METHODOLOGY

The Kaiser Family Foundation/SELF National Survey of Women on their Sexual Health is a nationally representative survey of 800 women ages 18 to 49. The survey was designed by staff at the Foundation, SELF, and Princeton Survey Research Associates (PSRA) and conducted by telephone by PSRA between December 10, 2002 and January 19, 2003. The sample was designed to generalize to all women in continental U.S. telephone households. Weighting was used to adjust for the effects of sample design as well to adjust for minor differences between the set of complete interviews and the populations they represent due to survey nonresponse. The demographic weighting parameters come from a special analysis of the March 2002 Current Population Survey. The response rate for this survey was 41 percent.

This analysis focuses on women's attitudes, knowledge and experiences through key life stages – specifically by age and relationship status (single or married or living as married). Two-thirds of 18- to 49-year-old women surveyed are currently married or living with a partner (56% married; 10% living with a partner). A third are considered “single,” including 20 percent who have never been married, 10 percent who are divorced, 2 percent separated, and 1 percent widowed. Ninety-four percent of the women surveyed had ever had sexual intercourse, and 84 percent were currently in a sexual relationship. About half (52%) of single women interviewed are currently in a sexual relationship.

The margin of error for the total sample of women is plus or minus 3.6 percent. See Table 1 for detailed information on the sampling errors for the report as well as the toplines (See Appendix).

TABLE 1. MARGIN OF SAMPLING ERROR

	TOTAL	AGE			RELATIONSHIP STATUS	
		18-29	30-39	40-49	MARRIED OR LIVING AS MARRIED	SINGLE OR NEVER BEEN MARRIED
Margin of error	3.6	6.4	6.1	6.2	4.5	6.3

ENDNOTES

¹ American Social Health Association, Facts and Answers About STDs: STD Statistics: <http://www.ashastd.org/stdfaqs/statistics.html>.

² Alan Guttmacher Institute, Fact sheet: Contraceptive Use, 1999: http://www.aqi-usa.org/pubs/fb_contr_use.html.

³ American Health Consultants and the David and Lucile Packard Foundation, Contraceptive Patient Handout Manual, 2000

⁴ American Cancer Society, Cancer Facts and Figures 2003: http://www.cancer.org/docroot/STT/stt_0.asp.

⁵ Centers for Disease Control and Prevention, Tracking the Hidden Epidemics: Trends in STDs in the United States 2000.

⁶ Centers for Disease Control and Prevention, HIV/AIDS Surveillance Report, Mid-Year Edition, Vol 13, No 1, 2002; Centers for Disease Control and Prevention, A Glance at the HIV Epidemic, 2002; Fleming, P et al., HIV Prevalence in the United States, 2000, 9th Conference on Retroviruses and Opportunistic Infections, February 2002.

⁷ Centers for Disease Control and Prevention, A Glance at the HIV Epidemic, 2002.

⁸ American Social Health Association, Facts and Answers about STDs: <http://www.ashastd.org/stdfaqs/index.html>.

⁹ Walboomers J et al., Human Papillomavirus is a Necessary Cause of Invasive Cancer Worldwide, *Journal of Pathology*, 189: 12-19, 1999; Schiffman M et al., HPV DNA Testing in Cervical Cancer Screening: Results from Women in a High-Risk Province of Costa Rica, *Journal of the American Medical Association*, 283(1), 2000.

¹⁰ American Social Health Association, Facts and Answers about STDs: HPV: <http://www.ashastd.org/stdfaqs/hpv.html>.

¹¹ Hatcher RA et al., *Contraceptive Technology*, 17th revised edition. New York: Ardent Media, 1998.

Appendix: Questionnaire and Detailed Findings

Notes for Toplines

*=<1%

-=0

†=subgroup too small to report

Percentages may not sum to 100% due to rounding.

Q1. PLEASE TELL ME IF YOU CONSIDER EACH OF THE FOLLOWING TO BE A SEXUAL HEALTH ISSUE.						
	TOTAL	AGE			RELATIONSHIP STATUS	
		18-29	30-39	40-49	MARRIED OR LIVING AS MARRIED	SINGLE OR NEVER BEEN MARRIED ¹
a. Sexual function						
Yes	73%	75%	72%	72%	73%	73%
No	23%	21%	24%	24%	23%	22%
Don't know	4%	5%	4%	4%	4%	6%
Refused	*	-	*	-	-	*
b. Menstruation						
Yes	56%	56%	56%	55%	58%	52%
No	41%	39%	43%	43%	40%	44%
Don't know	3%	5%	1%	2%	2%	4%
Refused	-	-	-	-	-	-
c. HIV/AIDS						
Yes	88%	91%	87%	86%	86%	90%
No	12%	9%	13%	13%	13%	10%
Don't know	*	*	-	1%	1%	-
Refused	-	-	-	-	-	-
d. Other STDs, that is sexually transmitted diseases such as gonorrhea, chlamydia, herpes, genital warts, and syphilis						
Yes	90%	92%	90%	88%	89%	92%
No	10%	7%	10%	12%	11%	8%
Don't know	*	1%	*	*	1%	-
Refused	-	-	-	-	-	-
e. Breast cancer						
Yes	57%	53%	59%	60%	58%	56%
No	41%	45%	41%	38%	40%	44%
Don't know	1%	2%	0%	2%	2%	1%
Refused	*	-	-	*	*	-
f. Reproductive cancer such as uterine, cervical, or ovarian						
Yes	70%	72%	70%	69%	69%	73%
No	27%	24%	28%	28%	28%	24%
Don't know	3%	4%	2%	3%	3%	3%
Refused	-	-	-	-	-	-
G. Fertility						
Yes	67%	73%	65%	62%	67%	66%
No	30%	22%	32%	36%	31%	28%
Don't know	3%	4%	3%	2%	2%	6%
Refused	*	*	*	*	1%	-
n	800	261	279	260	531	267

[RANDOMIZE: d always follows c]

¹Note: Single or never been married include those who are divorced, separated or widowed, but does not include their current relationship status

Q2. HOW CONCERNED ARE YOU PERSONALLY ABOUT [INSERT]—VERY CONCERNED, SOMEWHAT CONCERNED, NOT TOO CONCERNED, OR NOT AT ALL CONCERNED?

	TOTAL	AGE			RELATIONSHIP STATUS	
		18-29	30-39	40-49	MARRIED OR LIVING AS MARRIED	SINGLE OR NEVER BEEN MARRIED
a. Heart disease						
Very concerned	40%	35%	41%	45%	39%	43%
Somewhat concerned	37%	38%	35%	39%	40%	33%
Not too concerned	11%	16%	13%	6%	10%	14%
Not at all concerned	10%	10%	11%	9%	10%	9%
Don't know	1%	2%	-	*	1%	-
Refused	-	-	-	-	-	-
b. Depression or other mental health issues						
Very concerned	32%	29%	32%	36%	30%	37%
Somewhat concerned	32%	31%	30%	35%	33%	30%
Not too concerned	17%	20%	18%	13%	18%	16%
Not at all concerned	18%	20%	20%	15%	19%	17%
Don't know	*	*	-	1%	*	1%
Refused	*	-	-	1%	-	1%
c. HIV/AIDS						
Very concerned	33%	35%	34%	29%	28%	41%
Somewhat concerned	16%	16%	17%	15%	14%	18%
Not too concerned	16%	17%	14%	15%	15%	17%
Not at all concerned	35%	30%	34%	41%	42%	23%
Don't know	1%	1%	*	-	*	1%
Refused	-	-	-	-	-	-
d. Other STDs						
Very concerned	28%	32%	29%	24%	23%	38%
Somewhat concerned	16%	18%	16%	15%	15%	20%
Not too concerned	18%	17%	18%	18%	17%	19%
Not at all concerned	37%	32%	37%	43%	45%	23%
Don't know	*	1%	*	-	*	1%
Refused	-	-	-	-	-	-
e. Breast cancer						
Very concerned	48%	48%	48%	48%	48%	47%
Somewhat concerned	37%	34%	39%	39%	39%	33%
Not too concerned	10%	16%	8%	7%	9%	13%
Not at all concerned	5%	3%	5%	6%	4%	7%
Don't know	-	-	-	-	-	-
Refused	-	-	-	-	-	-
f. Reproductive cancers such as uterine, cervical, or ovarian cancer						
Very concerned	41%	41%	42%	40%	42%	38%
Somewhat concerned	37%	33%	41%	37%	38%	35%
Not too concerned	12%	16%	10%	9%	11%	14%
Not at all concerned	10%	9%	6%	15%	9%	13%
Don't know	*	*	*	-	*	*
Refused	-	-	-	-	-	-
g. Fertility						
Very concerned	14%	15%	19%	10%	13%	16%
Somewhat concerned	19%	27%	18%	14%	17%	25%
Not too concerned	18%	26%	11%	16%	17%	18%
Not at all concerned	47%	30%	51%	60%	52%	39%
Don't know	1%	2%	*	1%	*	2%
Refused	-	-	-	-	-	-
n	800	261	279	260	531	267

[RANDOMIZE: d always follows c]

For the next questions I'd like you to think about STDs including gonorrhea, chlamydia, herpes, genital warts, and syphilis.

Q3. AS I READ THE FOLLOWING LIST PLEASE TELL ME IF YOU STRONGLY AGREE WITH THIS STATEMENT, SOMEWHAT AGREE, SOMEWHAT DISAGREE, OR STRONGLY DISAGREE.						
	TOTAL	AGE			RELATIONSHIP STATUS	
		18-29	30-39	40-49	MARRIED OR LIVING AS MARRIED	SINGLE OR NEVER BEEN MARRIED
<i>a. STDs are not something people talk about even with close friends</i>						
Strongly agree	33%	22%	37%	38%	36%	26%
Somewhat agree	32%	33%	34%	29%	33%	30%
Somewhat disagree	21%	26%	18%	19%	19%	24%
Strongly disagree	13%	19%	9%	11%	9%	19%
Don't know	2%	*	2%	3%	2%	1%
Refused	*	-	-	*	*	-
<i>b. Getting an STD is not that big of a deal</i>						
Strongly agree	5%	2%	4%	9%	5%	6%
Somewhat agree	5%	4%	5%	5%	5%	4%
Somewhat disagree	9%	9%	7%	11%	7%	12%
Strongly disagree	81%	85%	83%	74%	82%	77%
Don't know	*	-	1%	1%	1%	-
Refused	-	-	-	-	-	-
<i>c. If you had an STD you would know it</i>						
Strongly agree	26%	23%	30%	26%	26%	27%
Somewhat agree	19%	17%	22%	17%	20%	17%
Somewhat disagree	22%	27%	21%	17%	21%	23%
Strongly disagree	30%	28%	24%	36%	30%	30%
Don't know	3%	4%	3%	3%	3%	3%
Refused	-	-	-	-	-	-
<i>d. Unless you have sex with a lot of people STDs are not something you have to worry about</i>						
Strongly agree	11%	6%	10%	16%	10%	12%
Somewhat agree	8%	5%	11%	9%	10%	5%
Somewhat disagree	14%	14%	13%	16%	15%	13%
Strongly disagree	66%	76%	66%	58%	65%	70%
Don't know	*	-	1%	1%	*	1%
Refused	-	-	-	-	-	-
<i>e. People often feel more embarrassed about having an STD than they do about other health issues</i>						
Strongly agree	70%	72%	67%	72%	71%	69%
Somewhat agree	22%	22%	24%	21%	23%	21%
Somewhat disagree	3%	4%	3%	2%	3%	3%
Strongly disagree	2%	1%	1%	4%	2%	3%
Don't know	2%	1%	4%	2%	2%	4%
Refused	-	-	-	-	-	-
<i>f. If you are responsible STDs are not a problem</i>						
Strongly agree	25%	21%	26%	28%	26%	24%
Somewhat agree	23%	22%	27%	20%	23%	23%
Somewhat disagree	22%	26%	18%	21%	21%	23%
Strongly disagree	29%	30%	27%	30%	29%	29%
Don't know	1%	*	3%	*	2%	*
Refused	-	-	-	-	-	-
n	800	261	279	260	531	267

[RANDOMIZE]

Q4. IN YOUR OPINION, HOW MANY SEXUAL PARTNERS WOULD YOU SAY PUTS SOMEONE AT RISK FOR STDs?

	TOTAL	AGE			RELATIONSHIP STATUS	
		18-29	30-39	40-49	MARRIED OR LIVING AS MARRIED	SINGLE OR NEVER BEEN MARRIED
1	72%	70%	70%	74%	72%	71%
2	12%	12%	13%	12%	14%	9%
3	3%	4%	3%	4%	3%	5%
4 or more	7%	8%	7%	6%	7%	9%
Don't know	5%	5%	7%	4%	4%	7%
Refused	*	1%	*	-	*	-
n	800	261	279	260	531	267

Q5. FOR EACH OF THE FOLLOWING PLEASE TELL ME IF YOU CAN GET STDs THIS WAY OR NOT. IF YOU DO NOT KNOW, PLEASE JUST SAY SO. CAN YOU GET STDs BY [INSERT]?

	TOTAL	AGE			RELATIONSHIP STATUS	
		18-29	30-39	40-49	MARRIED OR LIVING AS MARRIED	SINGLE OR NEVER BEEN MARRIED
a. Kissing						
Yes	42%	48%	40%	38%	40%	46%
No	46%	41%	49%	49%	49%	40%
Don't know	12%	11%	11%	13%	11%	14%
Refused	*	-	-	*	*	-
b. Sharing eating utensils						
Yes	13%	13%	11%	14%	12%	15%
No	72%	70%	74%	72%	72%	72%
Don't know	15%	18%	15%	13%	16%	13%
Refused	*	-	-	*	*	-
c. Sitting on a toilet seat						
Yes	25%	32%	28%	17%	22%	31%
No	58%	49%	57%	68%	60%	55%
Don't know	17%	19%	15%	15%	18%	14%
Refused	-	-	-	-	-	-
d. Engaging in oral sex						
Yes	91%	94%	90%	88%	90%	92%
No	3%	2%	3%	3%	2%	2%
Don't know	7%	4%	7%	9%	7%	5%
Refused	-	-	-	-	-	-
e. Engaging in sexual intercourse						
Yes	99%	100%	98%	99%	99%	99%
No	*	-	*	-	*	-
Don't know	1%	*	1%	1%	1%	1%
Refused	-	-	-	-	-	-
n	800	261	279	260	531	267

[RANDOMIZE: d and e always last and in order]

Q6. FOR EACH OF THE FOLLOWING PLEASE TELL ME IF STDS CAN CAUSE THIS OR NOT OR IF YOU DO NOT KNOW. CAN STDS CAUSE [INSERT]?						
	TOTAL	AGE			RELATIONSHIP STATUS	
		18-29	30-39	40-49	MARRIED OR LIVING AS MARRIED	SINGLE OR NEVER BEEN MARRIED
<i>a. Some kinds of cancer</i>						
Yes	59%	62%	55%	61%	56%	66%
No	7%	7%	8%	7%	7%	7%
Don't know	33%	30%	37%	33%	37%	27%
Refused	*	-	-	*	*	-
<i>b. Problems with fertility</i>						
Yes	90%	87%	93%	89%	91%	88%
No	1%	1%	*	1%	*	1%
Don't know	10%	12%	6%	10%	9%	11%
Refused	*	-	-	*	*	-
<i>c. Pregnancy complications and birth-related complications</i>						
Yes	95%	95%	95%	94%	95%	95%
No	1%	1%	1%	*	*	2%
Don't know	5%	4%	4%	6%	5%	3%
Refused	-	-	-	-	-	-
<i>d. Liver damage</i>						
Yes	35%	38%	34%	34%	34%	38%
No	6%	7%	4%	6%	4%	8%
Don't know	59%	55%	62%	60%	62%	54%
Refused	*	-	-	*	*	-
n	800	261	279	260	531	267

[RANDOMIZE]

Q7. PLEASE TELL ME IF THE FOLLOWING STATEMENTS ARE TRUE OR FALSE.						
	TOTAL	AGE			RELATIONSHIP STATUS	
		18-29	30-39	40-49	MARRIED OR LIVING AS MARRIED	SINGLE OR NEVER BEEN MARRIED
<i>a. Some people with STDs may not display symptoms for months or even years after being infected</i>						
True	93%	95%	89%	94%	92%	94%
False	4%	4%	7%	2%	5%	3%
Don't know	3%	1%	4%	4%	3%	3%
Refused	-	-	-	-	-	-
<i>b. Having an STD increases a person's risk of becoming infected with HIV/AIDS</i>						
True	52%	55%	51%	50%	49%	58%
False	27%	28%	26%	27%	28%	25%
Don't know	21%	16%	23%	24%	23%	18%
Refused	-	-	-	-	-	-
<i>c. Many people who have an STD don't know it</i>						
True	87%	90%	86%	86%	87%	88%
False	8%	7%	9%	7%	8%	8%
Don't know	5%	3%	5%	7%	5%	4%
Refused	-	-	-	-	-	-
<i>d. STDs can only be spread when symptoms are present</i>						
True	9%	11%	6%	10%	7%	12%
False	86%	85%	89%	83%	87%	83%
Don't know	6%	4%	6%	7%	6%	5%
Refused	-	-	-	-	-	-

continued on next page

Q7. PLEASE TELL ME IF THE FOLLOWING STATEMENTS ARE TRUE OR FALSE.

continued from previous page

<i>e. There is no point in knowing if you have an STD because there is nothing you can do about it anyway</i>						
True	2%	2%	1%	3%	1%	3%
False	97%	98%	97%	96%	98%	95%
Don't know	1%	*	2%	1%	1%	2%
Refused	-	-	-	-	-	-
<i>f. STDs are not that common among people my age</i>						
True	6%	3%	5%	11%	7%	5%
False	86%	95%	88%	75%	86%	87%
Don't know	8%	2%	7%	14%	7%	8%
Refused	-	-	-	-	-	-
<i>g. Women are more susceptible to STDs than men</i>						
True	40%	47%	37%	36%	41%	38%
False	44%	39%	46%	47%	44%	44%
Don't know	16%	14%	18%	17%	15%	18%
Refused	-	-	-	-	-	-
<i>h. There are some STDs you can get without having sexual intercourse</i>						
True	65%	79%	60%	58%	63%	69%
False	19%	12%	24%	22%	20%	17%
Don't know	16%	10%	16%	21%	17%	13%
Refused	-	-	-	-	-	-
n	800	261	279	260	531	267

[RANDOMIZE]

Q8. PLEASE TELL ME WHETHER THE FOLLOWING STATEMENTS ARE TRUE OR FALSE. A PAP SMEAR IS PRIMARILY A TEST FOR [INSERT]

	TOTAL	AGE			RELATIONSHIP STATUS	
		18-29	30-39	40-49	MARRIED OR LIVING AS MARRIED	SINGLE OR NEVER BEEN MARRIED
<i>a. Abnormal cells that can indicate cancer or pre-cancer</i>						
True	85%	79%	85%	91%	87%	81%
False	12%	14%	13%	9%	11%	13%
Don't know	3%	7%	2%	*	2%	5%
Refuse	-	-	-	-	-	-
<i>b. Pregnancy</i>						
True	8%	10%	6%	8%	6%	12%
False	90%	84%	94%	92%	93%	84%
Don't know	2%	6%	*	*	1%	4%
Refused	-	-	-	-	-	-
<i>c. HIV/AIDS</i>						
True	9%	11%	8%	10%	8%	12%
False	85%	78%	89%	87%	86%	81%
Don't know	6%	11%	3%	3%	5%	7%
Refused	-	-	-	-	-	-
<i>d. Other STDs</i>						
True	40%	48%	41%	32%	38%	44%
False	51%	42%	54%	57%	54%	45%
Don't know	9%	10%	5%	11%	8%	10%
Refused	-	-	-	-	-	-
n	800	261	279	260	531	267

Q9. APPROXIMATELY WHAT PROPORTION OF NEW HIV/AIDS CASES DO YOU THINK OCCUR IN WOMEN OR DO YOU NOT KNOW? ABOUT 1 IN 2, ABOUT 1 IN 3, ABOUT 1 IN 4, OR ABOUT 1 IN 10?

	TOTAL	AGE			RELATIONSHIP STATUS	
		18-29	30-39	40-49	MARRIED OR LIVING AS MARRIED	SINGLE OR NEVER BEEN MARRIED
About 1 in 2	9%	11%	10%	5%	9%	9%
*About 1 in 3	9%	11%	9%	7%	8%	9%
About 1 in 4 or	13%	17%	10%	13%	12%	16%
About 1 in 10	13%	12%	11%	15%	11%	16%
Don't know	56%	49%	60%	60%	59%	51%
Refused	-	-	-	-	-	-
n	800	261	279	260	531	267

*Source: Centers for Disease Control and Prevention. A Glance at the HIV Epidemic, 2002.

Q10. HOW MANY PEOPLE IN THIS COUNTRY DO YOU THINK WILL BECOME INFECTED WITH AN STD AT SOME POINT IN THEIR LIVES? ABOUT 1 IN 4000, ABOUT 1 IN 400, ABOUT 1 IN 40, ABOUT 1 IN 4, OR DO YOU NOT KNOW?

	TOTAL	AGE			RELATIONSHIP STATUS	
		18-29	30-39	40-49	MARRIED OR LIVING AS MARRIED	SINGLE OR NEVER BEEN MARRIED
About 1 in 4000	8%	6%	9%	8%	7%	10%
About 1 in 400	10%	11%	7%	11%	9%	10%
About 1 in 40	17%	18%	19%	13%	16%	18%
*About 1 in 4	20%	25%	16%	20%	21%	19%
Don't know	46%	40%	50%	48%	47%	43%
Refused	-	-	-	-	-	-
n	800	261	279	260	531	267

*Source: American Social Health Association. Facts and Answers about STDs: STD Statistics.

Q11. NEXT PLEASE THINK ABOUT PREGNANCY. APPROXIMATELY WHAT PERCENTAGE OF WOMEN AGE 15 TO 44 IN THIS COUNTRY DO YOU THINK WILL HAVE AN UNPLANNED PREGNANCY AT SOME POINT THEIR LIVES— 10 PERCENT, 25 PERCENT, 50 PERCENT, 75 PERCENT, OR DO YOU NOT KNOW?

	TOTAL	AGE			RELATIONSHIP STATUS	
		18-29	30-39	40-49	MARRIED OR LIVING AS MARRIED	SINGLE OR NEVER BEEN MARRIED
10%	7%	8%	7%	7%	8%	5%
25%	24%	24%	24%	25%	24%	26%
*50%	27%	29%	28%	24%	28%	27%
75%	18%	18%	18%	17%	17%	19%
Don't know	24%	21%	22%	27%	24%	23%
Refused	-	-	-	-	-	-
n	800	261	279	260	531	267

*Source: Allan Guttmacher Institute, Fact sheet: Contraceptive Use, 1999.

Q12. PLEASE TELL ME WHETHER YOU AGREE OR DISAGREE. IF YOU ARE RESPONSIBLE, UNPLANNED PREGNANCY IS NOT A PROBLEM. DO YOU STRONGLY AGREE, SOMEWHAT AGREE, SOMEWHAT DISAGREE, OR STRONGLY DISAGREE?

	TOTAL	AGE			RELATIONSHIP STATUS	
		18-29	30-39	40-49	MARRIED OR LIVING AS MARRIED	SINGLE OR NEVER BEEN MARRIED
Strongly agree	18%	17%	21%	17%	19%	16%
Somewhat agree	29%	31%	31%	25%	29%	30%
Somewhat disagree	25%	28%	24%	24%	25%	26%
Strongly disagree	26%	23%	22%	33%	25%	27%
Don't know	1%	1%	2%	1%	1%	2%
Refused	*	-	-	*	*	-
n	800	261	279	260	531	267

Next I'd like to know your opinion about different types of birth control and protection, such as birth control pills or condoms.

Q13. FOR EACH PLEASE TELL ME IF YOU STRONGLY AGREE, SOMEWHAT AGREE, SOMEWHAT DISAGREE OR STRONGLY DISAGREE.

	TOTAL	AGE			RELATIONSHIP STATUS	
		18-29	30-39	40-49	MARRIED OR LIVING AS MARRIED	SINGLE OR NEVER BEEN MARRIED
a. In general, men think using condoms has a negative effect on their sexual experience						
Strongly agree	36%	37%	32%	39%	35%	36%
Somewhat agree	38%	37%	40%	38%	41%	34%
Somewhat disagree	13%	13%	13%	14%	13%	14%
Strongly disagree	7%	9%	10%	2%	6%	10%
Don't know	5%	3%	5%	8%	6%	5%
Refused	-	-	-	-	-	-
b. If a woman carries a condom people might think she has a lot of partners						
Strongly agree	20%	19%	20%	21%	21%	18%
Somewhat agree	29%	26%	30%	32%	30%	27%
Somewhat disagree	22%	27%	20%	18%	22%	22%
Strongly disagree	27%	28%	27%	25%	25%	29%
Don't know	3%	1%	3%	4%	2%	3%
Refused	*	-	1%	*	*	*
c. If a man carries a condom people might think he has a lot of partners						
Strongly agree	22%	20%	23%	24%	23%	21%
Somewhat agree	29%	28%	29%	30%	31%	26%
Somewhat disagree	23%	25%	24%	19%	22%	24%
Strongly disagree	25%	27%	22%	25%	23%	27%
Don't know	1%	1%	1%	2%	1%	2%
Refused	*	-	1%	-	*	-
d. If a woman carries a condom she looks responsible						
Strongly agree	47%	46%	46%	48%	46%	47%
Somewhat agree	32%	32%	32%	31%	31%	32%
Somewhat disagree	12%	13%	12%	11%	13%	12%
Strongly disagree	7%	8%	8%	7%	8%	8%
Don't know	2%	1%	1%	3%	2%	1%
Refused	-	-	-	-	-	-

continued on next page

Q13. FOR EACH PLEASE TELL ME IF YOU STRONGLY AGREE, SOMEWHAT AGREE, SOMEWHAT DISAGREE OR STRONGLY DISAGREE.

continued from previous page

<i>e. If a man carries a condom he looks responsible</i>						
Strongly agree	51%	50%	51%	53%	49%	55%
Somewhat agree	32%	31%	34%	31%	33%	30%
Strongly disagree	7%	8%	6%	7%	8%	6%
Don't know	1%	*	2%	2%	2%	1%
Refused	*	-	*	-	*	-
<i>f. Buying condoms is embarrassing</i>						
Strongly agree	14%	11%	11%	21%	15%	13%
Somewhat agree	31%	26%	34%	32%	33%	26%
Somewhat disagree	17%	18%	19%	16%	16%	20%
Strongly disagree	35%	45%	35%	27%	34%	38%
Don't know	2%	1%	2%	4%	2%	3%
Refused	-	-	-	-	-	-
<i>g. It is hard to bring up the topic of condoms with a partner</i>						
Strongly agree	8%	7%	4%	13%	7%	11%
Somewhat agree	26%	19%	28%	30%	28%	21%
Somewhat disagree	20%	18%	24%	17%	20%	20%
Strongly disagree	42%	54%	41%	33%	40%	46%
Don't know	4%	2%	2%	7%	5%	2%
Refused	-	-	-	-	-	-
<i>h. It is up to the man to bring the condoms</i>						
Strongly agree	5%	3%	3%	9%	3%	9%
Somewhat agree	5%	4%	7%	4%	5%	5%
Somewhat disagree	16%	19%	16%	14%	15%	18%
Strongly disagree	73%	74%	73%	72%	75%	67%
Don't know	1%	1%	1%	*	*	1%
Refused	*	-	1%	-	*	-
n	800	261	279	260	531	267

[RANDOMIZE: b and c always a pair and d and e always a pair]

Q14. NOW THINKING ABOUT THE EFFECTIVENESS OF CONDOMS. IN YOUR OPINION, HOW EFFECTIVE ARE CONDOMS AT [INSERT]? ARE THEY VERY EFFECTIVE, SOMEWHAT EFFECTIVE, NOT TOO EFFECTIVE, OR NOT EFFECTIVE AT ALL?

	TOTAL	AGE			RELATIONSHIP STATUS	
		18-29	30-39	40-49	MARRIED OR LIVING AS MARRIED	SINGLE OR NEVER BEEN MARRIED
<i>a. Preventing pregnancy</i>						
Very effective	27%	30%	30%	22%	26%	30%
Somewhat effective	63%	62%	63%	65%	66%	59%
Not too effective	6%	6%	5%	8%	6%	7%
Not effective at all	2%	1%	2%	2%	2%	2%
Don't know	1%	1%	1%	2%	1%	2%
Refused	-	-	-	-	-	-
<i>b. Preventing HIV/AIDS</i>						
Very effective	29%	26%	31%	30%	28%	29%
Somewhat effective	56%	54%	56%	58%	58%	54%
Not too effective	7%	9%	5%	7%	8%	7%
Not effective at all	6%	8%	6%	4%	4%	9%
Don't know	2%	3%	2%	1%	2%	1%
Refused	-	-	-	-	-	-

continued on next page

Q14. NOW THINKING ABOUT THE EFFECTIVENESS OF CONDOMS. IN YOUR OPINION, HOW EFFECTIVE ARE CONDOMS AT [INSERT]? ARE THEY VERY EFFECTIVE, SOMEWHAT EFFECTIVE, NOT TOO EFFECTIVE, OR NOT EFFECTIVE AT ALL?

continued from previous page

c. Preventing other STDs

Very effective	28%	25%	31%	29%	28%	29%
Somewhat effective	59%	59%	59%	60%	62%	55%
Not too effective	6%	11%	4%	4%	5%	9%
Not effective at all	4%	5%	4%	3%	3%	5%
Don't know	2%	1%	2%	4%	2%	3%
Refused	-	-	-	-	-	-
n	800	261	279	260	531	267

[RANDOMIZE: b and c always an ordered pair]

Q15. IN YOUR OPINION, HOW EFFECTIVE ARE BIRTH CONTROL PILLS AT [INSERT]? ARE THEY VERY EFFECTIVE, SOMEWHAT EFFECTIVE, NOT TOO EFFECTIVE, OR NOT EFFECTIVE AT ALL?

	TOTAL	AGE			RELATIONSHIP STATUS	
		18-29	30-39	40-49	MARRIED OR LIVING AS MARRIED	SINGLE OR NEVER BEEN MARRIED
a. Preventing pregnancy						
Very effective	54%	50%	52%	61%	56%	50%
Somewhat effective	39%	43%	41%	33%	38%	41%
Not too effective	2%	3%	3%		1%	4%
Not effective at all	4%	2%	4%	5%	3%	4%
Don't know	1%	2%	1%	*	1%	1%
Refused	*	-	*	1%	*	*
b. Preventing HIV/AIDS						
Very effective	3%	1%	1%	5%	2%	4%
Somewhat effective	5%	7%	7%	3%	5%	7%
Not too effective	3%	4%	3%	3%	2%	5%
Not effective at all	87%	86%	89%	86%	89%	83%
Don't know	2%	2%	*	3%	2%	1%
Refused	-	-	-	-	-	-
c. Preventing other STDs						
Very effective	1%	1%	1%	2%	1%	2%
Somewhat effective	5%	4%	4%	5%	4%	5%
Not too effective	3%	4%	3%	3%	2%	5%
Not effective at all	89%	90%	91%	87%	91%	86%
Don't know	2%	1%	1%	3%	2%	2%
Refused	-	-	-	-	-	-
n	800	261	279	260	531	267

[RANDOMIZE: b and c always an ordered pair]

Q16. OVERALL, WHEN CHOOSING A METHOD OF CONTRACEPTION IS [INSERT] VERY IMPORTANT, SOMEWHAT IMPORTANT, NOT TOO IMPORTANT, OR NOT AT ALL IMPORTANT TO YOU?

	TOTAL	AGE			RELATIONSHIP STATUS	
		18-29	30-39	40-49	MARRIED OR LIVING AS MARRIED	SINGLE OR NEVER BEEN MARRIED
a. How well it protects against HIV/AIDS and other STDs						
Very important	75%	78%	76%	71%	72%	80%
Somewhat important	11%	9%	10%	13%	10%	12%
Not too important	2%	2%	2%	2%	3%	1%
Not at all important	11%	10%	11%	13%	14%	5%
Don't know	1%	1%	1%	1%	1%	1%
Refused	*	-	*	*	*	-
b. How well it prevents pregnancy						
Very important	84%	89%	82%	82%	85%	83%
Somewhat important	8%	7%	11%	7%	7%	11%
Not too important	1%	-	1%	2%	1%	-
Not at all important	5%	2%	5%	8%	6%	4%
Don't know	1%	1%	-	2%	1%	2%
Refused	*	-	*	*	*	-
c. How much it costs						
Very important	18%	18%	15%	21%	17%	21%
Somewhat important	33%	31%	34%	35%	34%	33%
Not too important	11%	13%	12%	9%	11%	12%
Not at all important	36%	36%	39%	33%	38%	32%
Don't know	1%	2%	*	2%	1%	2%
Refused	-	-	-	-	-	-
d. What your partner wants to use						
Very important	41%	38%	43%	43%	41%	42%
Somewhat important	43%	45%	42%	44%	44%	42%
Not too important	5%	5%	6%	3%	4%	7%
Not at all important	9%	10%	9%	9%	11%	6%
Don't know	1%	2%	1%	1%	*	4%
Refused	*	-	1%	*	*	-
e. That you don't have to discuss it with your partner						
Very important	32%	28%	32%	36%	33%	31%
Somewhat important	27%	26%	24%	29%	26%	29%
Not too important	11%	11%	14%	8%	12%	9%
Not at all important	27%	31%	28%	24%	29%	25%
Don't know	3%	4%	1%	3%	1%	6%
Refused	*	-	1%	-	*	*
f. How easy it is to use						
Very important	55%	49%	57%	61%	56%	54%
Somewhat important	33%	35%	34%	29%	32%	33%
Not too important	3%	6%	3%	1%	2%	5%
Not at all important	7%	7%	6%	8%	8%	5%
Don't know	1%	4%	-	1%	1%	3%
Refused	*	-	-	1%	*	*
g. Whether it interferes with intimacy						
Very important	28%	19%	34%	30%	28%	27%
Somewhat important	45%	48%	44%	44%	46%	45%
Not too important	10%	14%	8%	7%	9%	10%
Not at all important	16%	17%	13%	17%	16%	15%
Don't know	2%	2%	1%	2%	1%	3%
Refused	*	-	-	*	*	-
n	800	261	279	260	531	267

[RANDOMIZE]

Q17. AS FAR AS YOU KNOW, IF A WOMAN HAS JUST HAD SEX AND HER BIRTH CONTROL FAILED OR SHE DIDN'T USE BIRTH CONTROL, IS THERE ANYTHING SHE CAN DO IN THE NEXT FEW DAYS TO PREVENT PREGNANCY?

	TOTAL	AGE			RELATIONSHIP STATUS	
		18-29	30-39	40-49	MARRIED OR LIVING AS MARRIED	SINGLE OR NEVER BEEN MARRIED
Yes	67%	74%	63%	64%	66%	69%
No	18%	15%	21%	19%	19%	16%
Don't know	15%	12%	16%	17%	15%	15%
Refused	*	-	*	-	*	-
n	800	261	279	260	531	267

Q18. HAVE YOU EVER HEARD OF EMERGENCY CONTRACEPTIVE PILLS, SOMETIMES CALLED MORNING AFTER PILLS?

	TOTAL	AGE			RELATIONSHIP STATUS	
		18-29	30-39	40-49	MARRIED OR LIVING AS MARRIED	SINGLE OR NEVER BEEN MARRIED
Yes	84%	86%	87%	80%	85%	82%
No	15%	14%	12%	20%	14%	18%
Don't know	*	*	*	-	*	-
Refused	*	-	*	-	*	-
n	800	261	279	260	531	267

Q19. DO YOU HAVE A PRESCRIPTION FOR EMERGENCY CONTRACEPTIVES?

	TOTAL	AGE			RELATIONSHIP STATUS	
		18-29	30-39	40-49	MARRIED OR LIVING AS MARRIED	SINGLE OR NEVER BEEN MARRIED
Yes	1%	2%	1%	1%	1%	2%
No	82%	84%	85%	78%	84%	80%
Never heard of EC	16%	14%	13%	20%	15%	18%
Don't know	*	-	*	1%	*	1%
Refused	-	-	-	-	-	-
n	800	261	279	260	531	267

Q20. HAVE YOU EVER USED EMERGENCY CONTRACEPTIVES?

	TOTAL	AGE			RELATIONSHIP STATUS	
		18-29	30-39	40-49	MARRIED OR LIVING AS MARRIED	SINGLE OR NEVER BEEN MARRIED
Yes	6%	10%	5%	2%	4%	9%
No	78%	76%	81%	78%	81%	73%
Never heard of ECPs	16%	14%	13%	20%	15%	18%
Don't know	*	-	-	*	*	-
Refused	-	-	-	-	-	-
n	800	261	279	260	531	267

The next few questions are about talking to your health care provider.

Q21. HAVE YOU EVER DISCUSSED [INSERT] WITH A HEALTH CARE PROVIDER LIKE A DOCTOR, NURSE, OR CLINIC COUNSELOR?						
	TOTAL	AGE			RELATIONSHIP STATUS	
		18-29	30-39	40-49	MARRIED OR LIVING AS MARRIED	SINGLE OR NEVER BEEN MARRIED
a. HIV/AIDS						
Yes	50%	55%	52%	44%	44%	63%
No	50%	45%	48%	56%	56%	37%
Don't know	*	*	-	-	*	-
Refused	*	-	*	-	*	-
b. Other STDs						
Yes	52%	58%	53%	45%	46%	63%
No	48%	42%	47%	54%	53%	36%
Don't know	*	-	1%	1%	*	*
Refused	*	-	*	-	*	-
c. Birth control						
Yes	88%	87%	90%	87%	90%	83%
No	12%	13%	10%	13%	9%	17%
Don't know	*	*	-	-	*	-
Refused	*	-	*	-	*	-
d. Your sexual history						
Yes	73%	73%	72%	74%	71%	77%
No	26%	26%	27%	26%	28%	22%
Don't know	*	*	*	-	*	*
Refused	*	-	*	-	*	-
e. Weight or physical activity						
Yes	79%	71%	78%	86%	79%	79%
No	21%	27%	21%	14%	21%	21%
Don't know	*	1%	-	-	*	1%
Refused	*	-	*	-	*	-
f. Blood pressure						
Yes	74%	70%	73%	80%	75%	73%
No	26%	30%	27%	20%	25%	27%
Don't know	-	-	-	-	-	-
Refused	*	-	*	-	*	-
g. Fertility						
Yes	42%	40%	42%	45%	45%	36%
No	57%	59%	58%	54%	54%	62%
Don't know	1%	1%	-	*	*	2%
Refused	*	-	*	-	*	-
h. Mammograms						
Yes	72%	46%	73%	95%	76%	63%
No	28%	52%	26%	5%	23%	36%
Don't know	1%	2%	-	-	*	1%
Refused	*	-	*	-	*	-
i. Breast self-exams						
Yes	92%	84%	95%	96%	93%	89%
No	8%	16%	5%	4%	7%	11%
Don't know	*	*	-	-	*	-
Refused	*	-	*	-	*	-
j. Smoking						
Yes	58%	58%	57%	59%	53%	67%
No	42%	41%	42%	41%	46%	32%
Don't know	*	1%	1%	-	*	1%
Refused	*	-	*	-	*	-
n	800	261	279	260	531	267

[RANDOMIZE: b always follows a]

Q22. HAVE YOU EVER HAD PROBLEMS TALKING TO YOUR HEALTH CARE PROVIDER ABOUT YOUR SEXUAL HEALTH BECAUSE [INSERT]?

	TOTAL	AGE			RELATIONSHIP STATUS	
		18-29	30-39	40-49	MARRIED OR LIVING AS MARRIED	SINGLE OR NEVER BEEN MARRIED
<i>a. You thought they might be judging you</i>						
Yes	10%	10%	8%	14%	8%	16%
No	89%	89%	92%	85%	92%	82%
Don't know	1%	1%	-	1%	*	1%
Refused	*	-	*	-	*	-
<i>b. You were embarrassed</i>						
Yes	18%	18%	16%	21%	18%	20%
No	81%	82%	84%	79%	82%	80%
Don't know	*	*	-	*	*	*
Refused	*	-	*	-	*	-
<i>c. You didn't think they needed to know</i>						
Yes	14%	14%	12%	16%	13%	16%
No	85%	85%	87%	83%	86%	83%
Don't know	1%	1%	1%	1%	1%	1%
Refused	*	-	*	-	*	-
<i>d. There was not enough time during your appointment</i>						
Yes	14%	11%	13%	19%	15%	14%
No	85%	88%	87%	80%	85%	85%
Don't know	*	1%	-	*	*	1%
Refused	*	-	*	-	*	-
<i>e. You didn't know what questions to ask</i>						
Yes	17%	13%	15%	22%	16%	19%
No	83%	86%	84%	78%	84%	80%
Don't know	*	1%	*	-	*	*
Refused	*	-	*	-	*	-
n	800	261	279	260	531	267

[RANDOMIZE]

Q23. HAVE YOU EVER KEPT INFORMATION FROM YOUR HEALTH CARE PROVIDER ABOUT [INSERT]?

	TOTAL	AGE			RELATIONSHIP STATUS	
		18-29	30-39	40-49	MARRIED OR LIVING AS MARRIED	SINGLE OR NEVER BEEN MARRIED
<i>a. Your sexual history</i>						
Yes	11%	10%	10%	13%	9%	15%
No	89%	90%	90%	87%	91%	85%
Don't know	-	-	-	-	-	-
Refused	-	-	-	-	-	-
<i>b. Your history with STDs</i>						
Yes	3%	2%	2%	4%	2%	4%
No	97%	98%	98%	95%	98%	96%
Don't know	*	-	-	*	-	*
Refused	-	-	-	-	-	-
<i>c. Your birth control use</i>						
Yes	5%	7%	4%	5%	5%	5%
No	94%	93%	96%	93%	94%	94%
Don't know	1%	*	-	1%	1%	*
Refused	-	-	-	-	-	-

continued on next page

Q23. HAVE YOU EVER KEPT INFORMATION FROM YOUR HEALTH CARE PROVIDER ABOUT [INSERT]?

continued from previous page

d. Whether you have ever had an abortion

Yes	4%	2%	3%	6%	4%	4%
No	96%	98%	96%	94%	96%	96%
Don't know	*	-	1%	-	*	-
Refused	-	-	-	-	-	-
n	800	261	279	260	531	267

These next few questions are about your sexual health and behavior. Please keep in mind that all of your answers are private.

Q24. HAVE YOU EVER HAD SEXUAL INTERCOURSE?

	TOTAL	AGE			RELATIONSHIP STATUS	
		18-29	30-39	40-49	MARRIED OR LIVING AS MARRIED	SINGLE OR NEVER BEEN MARRIED
Yes	94%	86%	96%	98%	98%	85%
No	5%	13%	2%	1%	1%	14%
Don't know	*	-	*	-	*	-
Refused	1%	*	1%	1%	1%	1%
n	800	261	279	260	531	267

Q25. NEXT I HAVE SOME QUESTIONS ABOUT THE ROLES MEN AND WOMEN PLAY IN SEXUAL RELATIONSHIPS. FOR EACH OF THE FOLLOWING PLEASE TELL ME IF IT IS USUALLY YOU, YOUR PARTNER, OR BOTH EQUALLY WHO [INSERT]?

Based on those who are sexually active

	TOTAL	AGE			RELATIONSHIP STATUS	
		18-29	30-39	40-49	MARRIED OR LIVING AS MARRIED	SINGLE OR NEVER BEEN MARRIED
a. Makes sure that birth control is used						
Usually you	28%	29%	25%	29%	26%	32%
Usually your partner	2%	*	3%	2%	2%	1%
Both equally	52%	58%	54%	46%	51%	56%
Does not apply [Volunteered]	18%	11%	18%	23%	21%	9%
Don't know	*	1%	-	-	-	1%
Refused	*	1%	*	*	*	1%
b. Brings up the question of whether to use condoms or not						
Usually you	18%	19%	13%	21%	14%	28%
Usually your partner	5%	4%	5%	6%	5%	6%
Both equally	42%	54%	42%	32%	37%	53%
Does not apply [Volunteered]	34%	21%	39%	40%	44%	12%
Don't know	*	1%	*	-	*	1%
Refused	1%	-	1%	*	*	1%
c. Pays for birth control						
Usually you	25%	37%	19%	22%	16%	47%
Usually your partner	9%	12%	9%	6%	9%	7%
Both equally	38%	35%	43%	36%	40%	34%
Does not apply [Volunteered]	27%	16%	28%	35%	34%	11%
Don't know	*	1%	1%	-	*	1%
Refused	*	-	1%	*	*	1%

continued on next page

Q25. NEXT I HAVE SOME QUESTIONS ABOUT THE ROLES MEN AND WOMEN PLAY IN SEXUAL RELATIONSHIPS. FOR EACH OF THE FOLLOWING PLEASE TELL ME IF IT IS USUALLY YOU, YOUR PARTNER, OR BOTH EQUALLY WHO [INSERT]?

continued from previous page

Based on those who are sexually active

d. Suggests getting tested for HIV/AIDS or other STDs

Usually you	23%	30%	17%	23%	16%	38%
Usually your partner	1%	0%	1%	2%	1%	0%
Both equally	35%	42%	40%	25%	33%	42%
Does not apply [Volunteered]	39%	27%	40%	49%	48%	19%
Don't know	1%	1%	1%	1%	1%	1%
Refused	1%	-	1%	1%	1%	1%

e. Brings up sexual history

Usually you	19%	27%	15%	17%	14%	32%
Usually your partner	3%	4%	4%	1%	2%	5%
Both equally	44%	46%	50%	38%	43%	47%
Does not apply [Volunteered]	32%	22%	30%	41%	40%	13%
Don't know	1%	1%	1%	2%	1%	1%
Refused	1%	-	1%	2%	*	2%
n	745	222	268	255	521	223

Q26. IT IS SOMETIMES DIFFICULT TO DISCUSS SEXUAL HEALTH ISSUES WITH A PARTNER. HOW OFTEN DO YOU THINK WOMEN KEEP INFORMATION FROM A PARTNER, ABOUT [INSERT], OFTEN, SOMETIMES, RARELY, OR NEVER?

	TOTAL	AGE			RELATIONSHIP STATUS	
		18-29	30-39	40-49	MARRIED OR LIVING AS MARRIED	SINGLE OR NEVER BEEN MARRIED
a. Their sexual history						
Often	50%	47%	55%	48%	50%	50%
Sometimes	40%	42%	37%	42%	42%	38%
Rarely	4%	5%	3%	4%	4%	4%
Never	2%	3%	1%	3%	1%	4%
Don't know	3%	3%	4%	3%	3%	5%
Refused	*	-	*	-	*	-
b. Their history with STDs						
Often	48%	44%	55%	45%	48%	48%
Sometimes	35%	36%	29%	40%	36%	34%
Rarely	7%	10%	7%	3%	6%	7%
Never	5%	7%	3%	5%	4%	7%
Don't know	5%	3%	6%	7%	5%	5%
Refused	*	-	*	*	*	-
c. Their birth control use						
Often	22%	20%	24%	20%	23%	18%
Sometimes	46%	42%	47%	49%	46%	46%
Rarely	19%	25%	17%	17%	19%	20%
Never	9%	9%	9%	8%	7%	12%
Don't know	4%	3%	2%	7%	4%	4%
Refused	*	-	*	-	*	-
n	800	261	279	260	531	267

Q27. PLEASE TELL ME HOW BIG OF A REASON EACH OF THE FOLLOWING IS FOR WHY WOMEN DO NOT TALK TO THEIR PARTNERS ABOUT SEXUAL HEALTH ISSUES. IS THIS A VERY BIG REASON, SOMEWHAT BIG REASON, NOT TOO BIG A REASON, OR NOT A REASON AT ALL?

	TOTAL	AGE			RELATIONSHIP STATUS	
		18-29	30-39	40-49	MARRIED OR LIVING AS MARRIED	SINGLE OR NEVER BEEN MARRIED
a. They don't know how to bring it up						
Very big reason	40%	41%	38%	42%	40%	40%
Somewhat big reason	45%	44%	47%	45%	46%	44%
Not too big a reason	6%	6%	5%	6%	6%	5%
Not a reason at all	7%	7%	8%	6%	7%	8%
Don't know	2%	2%	2%	1%	1%	3%
Refused	*	-	*	-	*	-
b. They are embarrassed						
Very big reason	44%	47%	42%	41%	43%	45%
Somewhat big reason	44%	43%	43%	45%	46%	40%
Not too big a reason	4%	3%	5%	4%	4%	4%
Not a reason at all	7%	6%	7%	9%	7%	8%
Don't know	1%	1%	2%	1%	1%	3%
Refused	-	-	-	-	-	-
c. They don't know enough about the issue						
Very big reason	21%	24%	20%	21%	20%	24%
Somewhat big reason	48%	48%	47%	48%	48%	47%
Not too big a reason	14%	11%	17%	13%	16%	9%
Not a reason at all	15%	15%	14%	14%	14%	15%
Don't know	2%	2%	2%	3%	2%	3%
Refused	*	*	-	*	*	*
d. They worry about what the other person will think of them						
Very big reason	52%	56%	54%	47%	52%	51%
Somewhat big reason	36%	33%	35%	41%	37%	35%
Not too big a reason	5%	3%	5%	6%	5%	6%
Not a reason at all	6%	7%	5%	5%	5%	7%
Don't know	1%	1%	1%	1%	1%	1%
Refused	-	-	-	-	-	-
e. They do not think women should talk about these things						
Very big reason	16%	15%	13%	18%	15%	17%
Somewhat big reason	31%	30%	32%	32%	31%	32%
Not too big a reason	21%	24%	22%	16%	22%	19%
Not a reason at all	29%	29%	30%	29%	30%	28%
Don't know	3%	2%	3%	4%	3%	4%
Refused	*	-	-	*	*	-
f. They are afraid the person will leave them						
Very big reason	41%	42%	42%	40%	41%	43%
Somewhat big reason	39%	38%	44%	36%	41%	36%
Not too big a reason	10%	11%	7%	13%	10%	10%
Not a reason at all	8%	8%	6%	9%	8%	8%
Don't know	1%	1%	1%	2%	1%	2%
Refused	*	-	*	-	-	*
g. They don't think their partner needs to know						
Very big reason	23%	18%	26%	25%	25%	19%
Somewhat big reason	46%	48%	44%	45%	44%	49%
Not too big a reason	13%	14%	15%	10%	13%	13%
Not a reason at all	16%	17%	12%	17%	16%	14%
Don't know	2%	2%	3%	2%	1%	4%
Refused	*	-	-	*	*	-
n	800	261	279	260	531	267

[RANDOMIZE]

Q28. ARE YOU CURRENTLY IN A SEXUAL RELATIONSHIP?
Based on those who are sexually active

	TOTAL	AGE			RELATIONSHIP STATUS	
		18-29	30-39	40-49	MARRIED OR LIVING AS MARRIED	SINGLE OR NEVER BEEN MARRIED
Yes	84%	80%	90%	81%	97%	52%
No	16%	20%	10%	18%	3%	47%
Don't know	-	-	-	-	-	-
Refused	*	-	-	*	-	1%
n	745	222	268	255	521	223

Q29. HAVE YOU AND YOUR PARTNER EVER HAD A CONVERSATION ABOUT [INSERT]?
Based on those who are currently in a sexual relationship

	TOTAL	AGE			RELATIONSHIP STATUS	
		18-29	30-39	40-49	MARRIED OR LIVING AS MARRIED	SINGLE OR NEVER BEEN MARRIED
a. Your birth control options						
Yes	81%	86%	86%	71%	82%	75%
No	19%	14%	14%	28%	18%	24%
Don't know	*	-	*	1%	*	1%
Refused	-	-	-	-	-	-
b. Whether to use condoms specifically						
Yes	72%	81%	72%	63%	69%	83%
No	28%	19%	28%	35%	31%	15%
Don't know	*	-	-	1%	*	2%
Refused	-	-	-	-	-	-
c. Whether to get tested for HIV/AIDS						
Yes	51%	61%	55%	39%	48%	65%
No	49%	39%	45%	61%	52%	35%
Don't know	-	-	-	-	-	-
Refused	-	-	-	-	-	-
d. Whether to get tested for other STDs, such as herpes or gonorrhea						
Yes	40%	56%	40%	28%	36%	58%
No	60%	44%	60%	72%	64%	42%
Don't know	-	-	-	-	-	-
Refused	-	-	-	-	-	-
e. Your sexual histories						
Yes	83%	88%	83%	78%	81%	91%
No	17%	12%	17%	21%	19%	9%
Don't know	*	-	-	*	*	-
Refused	*	-	1%	-	*	-
f. Pregnancy and having children						
Yes	90%	95%	93%	83%	92%	81%
No	10%	5%	7%	17%	8%	19%
Don't know	-	-	-	-	-	-
Refused	-	-	-	-	-	-
n	629	178	239	212	510	119

Q30. MY NEXT QUESTIONS ARE ABOUT BIRTH CONTROL OR PROTECTION. HAVE YOU OR YOUR PARTNER BEEN STERILIZED, OR HAVE ANY CONDITION THAT MAKES IT IMPOSSIBLE FOR YOU TO EVER GET PREGNANT?

Based on those who are sexually active

	TOTAL	AGE			RELATIONSHIP STATUS	
		18-29	30-39	40-49	MARRIED OR LIVING AS MARRIED	SINGLE OR NEVER BEEN MARRIED
Yes	45%	14%	47%	69%	50%	33%
No	54%	85%	53%	30%	50%	65%
Lesbian [Volunteered]	*	*	-	*	-	1%
Don't know	1%	1%	-	1%	*	1%
Refused	*	-	-	*	-	1%
n	745	222	268	255	521	223

Q31. ARE YOU TRYING TO GET PREGNANT OR CURRENTLY PREGNANT?

Based on those who are sexually active and can get pregnant

	TOTAL	AGE			RELATIONSHIP STATUS	
		18-29	30-39	40-49	MARRIED OR LIVING AS MARRIED	SINGLE OR NEVER BEEN MARRIED
Yes	13%	15%	15%	5%	18%	4%
No	86%	84%	84%	95%	81%	95%
Don't know	1%	1%	1%	-	1%	1%
n	413	188	149	76	264	148

Q32. WHEN YOU HAVE SEXUAL INTERCOURSE, HOW OFTEN DO YOU USE BIRTH CONTROL OR PROTECTION? WOULD YOU SAY ALL THE TIME, MOST OF THE TIME, ONLY SOMETIMES, OR NEVER?

Based on those who are sexually active and are not currently pregnant or trying to get pregnant and can get pregnant

	TOTAL	AGE			RELATIONSHIP STATUS	
		18-29	30-39	40-49	MARRIED OR LIVING AS MARRIED	SINGLE OR NEVER BEEN MARRIED
All the time	67%	75%	64%	56%	63%	73%
Most of the time	10%	12%	9%	9%	8%	14%
Only sometimes	6%	6%	7%	3%	6%	6%
Never	16%	7%	19%	28%	23%	5%
Don't know	1%	*	-	2%	-	1%
Refused	1%	-	1%	1%	1%	1%
n	356	160	123	73	215	140

Q33. WHEN YOU HAVE SEXUAL INTERCOURSE WHICH METHOD OF CONTRACEPTION DO YOU MOST OFTEN USE?

Based on those who are sexually active and are not currently pregnant or trying to get pregnant and can get pregnant

	TOTAL	AGE			RELATIONSHIP STATUS	
		18-29	30-39	40-49	MARRIED OR LIVING AS MARRIED	SINGLE OR NEVER BEEN MARRIED
Birth control pills	36%	43%	34%	25%	33%	41%
Condoms	32%	29%	34%	36%	28%	39%
Injections	6%	9%	3%	3%	6%	5%
Patch	2%	3%	2%	-	3%	1%
Rings	*	1%	-	-	*	-
Diaphragm	1%	1%	-	5%	2%	1%
Cervical cap	*	-	1%	-	*	-
IUD	2%	2%	3%	1%	2%	2%
Withdrawal	*	-	1%	-	*	-
Natural Family Planning	*	-	1%	-	*	-
Do not use anything	15%	8%	18%	29%	22%	5%
Other	2%	3%	2%	-	*	4%
Don't know	1%	2%	-	-	1%	1%
Refused	2%	2%	2%	1%	1%	3%
n	356	160	123	73	215	140

Q34. HAVE [INSERT]?

Based on those who are sexually active

	TOTAL	AGE			RELATIONSHIP STATUS	
		18-29	30-39	40-49	MARRIED OR LIVING AS MARRIED	SINGLE OR NEVER BEEN MARRIED
a. You ever suggested using a condom with a partner						
Yes	79%	89%	80%	69%	75%	87%
No	21%	11%	19%	30%	24%	12%
Don't know	1%	*	1%	-	1%	*
Refused	*	-	-	*	-	1%
b. You ever tried to talk a partner out of using a condom						
Yes	6%	7%	6%	6%	7%	5%
No	93%	92%	94%	94%	93%	94%
Don't know	*	1%	-	-	-	1%
Refused	*	-	1%	*	*	1%
c. A partner ever tried to talk you out of making him use a condom						
Yes	33%	39%	31%	30%	27%	48%
No	67%	61%	69%	70%	73%	52%
Don't know	-	-	-	-	-	-
Refused	*	-	-	*	-	1%
d. You ever been in a situation where you intended to use a condom but did not						
Yes	38%	47%	39%	31%	35%	46%
No	61%	52%	61%	68%	65%	52%
Don't know	*	1%	-	*	-	1%
Refused	*	-	-	*	-	1%
e. You ever bought condoms						
Yes	71%	81%	74%	59%	68%	76%
No	29%	19%	26%	40%	31%	23%
Don't know	*	-	*	1%	*	1%
Refused	*	-	-	*	-	1%

continued on next page

Q34. HAVE [INSERT]?

continued from previous page

Based on those who are sexually active*f. You have condoms in your home for your own use*

Yes	38%	57%	38%	23%	32%	54%
No	61%	43%	62%	77%	68%	46%
Don't know	-	-	-	-	-	-
Refused	*	-	-	*	-	1%
<i>g. You carry condoms when you go out</i>						
Yes	10%	16%	8%	8%	5%	24%
No	89%	84%	92%	91%	95%	75%
Don't know	*	*	-	-	-	*
Refused	*	-	-	*	-	1%
n	745	222	268	255	521	223

[RANDOMIZE]

Q35. HAVE YOU EVER THOUGHT YOU WERE PREGNANT WHEN YOU DID NOT PLAN TO BE?**Based on those who are sexually active**

	TOTAL	AGE			RELATIONSHIP STATUS	
		18-29	30-39	40-49	MARRIED OR LIVING AS MARRIED	SINGLE OR NEVER BEEN MARRIED
Yes	64%	64%	65%	62%	65%	61%
No	36%	36%	35%	37%	35%	38%
Don't know	-	-	-	-	-	-
Refused	*	-	-	*	-	1%
n	745	222	268	255	521	223

Q36. HAVE YOU EVER HAD AN STD?

	TOTAL	AGE			RELATIONSHIP STATUS	
		18-29	30-39	40-49	MARRIED OR LIVING AS MARRIED	SINGLE OR NEVER BEEN MARRIED
Yes	14%	11%	17%	15%	14%	16%
No	85%	88%	83%	83%	86%	82%
Don't know	*	1%	-	*	-	1%
Refused	1%	-	*	1%	*	1%
n	800	261	279	260	531	267

Q37A. HAVE YOU EVER BEEN TESTED FOR HIV/AIDS?

	TOTAL	AGE			RELATIONSHIP STATUS	
		18-29	30-39	40-49	MARRIED OR LIVING AS MARRIED	SINGLE OR NEVER BEEN MARRIED
Yes	64%	67%	73%	54%	63%	67%
No	34%	32%	25%	45%	36%	32%
Don't know	1%	*	2%	1%	1%	1%
Refused	*	*	1%	-	*	1%
n	800	261	279	260	531	267

Q37B. HOW DID YOU KNOW YOU WERE TESTED FOR HIV/AIDS? DID YOU ASK TO BE TESTED FOR IT, DID THE HEALTH CARE PROVIDER TELL YOU THIS TEST WAS BEING DONE, OR WAS IT YOUR IMPRESSION THAT THE TEST WAS A ROUTINE PART OF THE EXAM?

Based on those who have been tested for HIV/AIDS

	TOTAL	AGE			RELATIONSHIP STATUS	
		18-29	30-39	40-49	MARRIED OR LIVING AS MARRIED	SINGLE OR NEVER BEEN MARRIED
Asked to be tested	46%	53%	41%	44%	41%	55%
Doctor/nurse told me	19%	21%	21%	15%	19%	20%
Under impression it was a routine part of the exam	15%	13%	15%	18%	16%	13%
Had to give consent to be tested [Volunteered]	1%	1%	2%	1%	1%	2%
Blood donation [Volunteered]	4%	3%	3%	6%	4%	2%
Marriage license [Volunteered]	2%	1%	3%	2%	3%	-
Child birth [Volunteered]	7%	6%	9%	4%	9%	2%
Other (Specify)	6%	2%	6%	10%	6%	6%
Don't know	*	1%	-	-	*	-
Refused	*	-	-	1%	*	-
n	507	170	201	136	327	179

Q38A. HAVE YOU EVER BEEN TESTED FOR OTHER STDs?

	TOTAL	AGE			RELATIONSHIP STATUS	
		18-29	30-39	40-49	MARRIED OR LIVING AS MARRIED	SINGLE OR NEVER BEEN MARRIED
Yes	57%	66%	60%	47%	54%	64%
No	40%	33%	38%	50%	43%	34%
Don't know	2%	1%	2%	3%	2%	1%
Refused	*	*	1%	*	*	1%
n	800	261	279	260	531	267

Q38B. HOW DID YOU KNOW YOU WERE TESTED FOR OTHER STDs? DID YOU ASK TO BE TESTED FOR IT, DID THE HEALTH CARE PROVIDER TELL YOU THIS TEST WAS BEING DONE, OR WAS IT YOUR IMPRESSION THAT THE TEST WAS A ROUTINE PART OF THE EXAM?

Based on those who have been tested for other STDs

	TOTAL	AGE			RELATIONSHIP STATUS	
		18-29	30-39	40-49	MARRIED OR LIVING AS MARRIED	SINGLE OR NEVER BEEN MARRIED
Asked to be tested	39%	43%	35%	38%	33%	48%
Doctor/nurse told me	32%	31%	33%	31%	33%	30%
Under impression it was a routine part of the exam	20%	19%	20%	20%	22%	16%
Had to give consent to be tested [Volunteered]	*	1%	-	-	-	1%
Marriage license [Volunteered]	2%	1%	1%	3%	3%	-
Child birth [Volunteered]	4%	5%	4%	2%	5%	3%
Other	3%	-	4%	4%	3%	2%
Don't know	1%	*	1%	1%	1%	1%
n	448	168	162	118	278	169

Q39. NEXT I HAVE A COUPLE OF QUESTIONS ABOUT YOUR GYNECOLOGICAL CARE. HAVE YOU BEEN TO A HEALTH CARE PROVIDER FOR A ROUTINE GYNECOLOGICAL EXAM IN THE LAST FIVE YEARS OR NOT?

	TOTAL	AGE			RELATIONSHIP STATUS	
		18-29	30-39	40-49	MARRIED OR LIVING AS MARRIED	SINGLE OR NEVER BEEN MARRIED
Yes	92%	85%	96%	94%	96%	84%
No	8%	13%	4%	6%	4%	14%
Don't know	*	1%	-	-	-	1%
Refused	*	*	*	-	-	1%
n	800	261	279	260	531	267

Q40. HAS A HEALTH CARE PROVIDER EVER ADVISED YOU ABOUT STD TESTING?

	TOTAL	AGE			RELATIONSHIP STATUS	
		18-29	30-39	40-49	MARRIED OR LIVING AS MARRIED	SINGLE OR NEVER BEEN MARRIED
Yes	39%	50%	39%	30%	37%	44%
No	60%	50%	61%	68%	62%	55%
Don't know	1%	1%	*	2%	1%	1%
Refused	-	-	-	-	-	-
n	800	261	279	260	531	267

Q41. THERE ARE A LOT OF REASONS WHY PEOPLE MIGHT NOT GET TESTED FOR STDs OR FOR HIV/AIDS. FOR EACH OF THE FOLLOWING, PLEASE TELL ME HOW IMPORTANT OF A REASON THIS IS FOR YOU?

Based on those who have not been tested for HIV/AIDS or other STDs

	TOTAL	AGE			RELATIONSHIP STATUS	
		18-29	30-39	40-49	MARRIED OR LIVING AS MARRIED	SINGLE OR NEVER BEEN MARRIED
a. It is too expensive						
Very important	7%	9%	†	4%	5%	†
Somewhat important	7%	10%	†	7%	8%	†
Not too important	6%	8%	†	5%	4%	†
Not a reason at all	75%	66%	†	82%	82%	†
Don't know	5%	8%	†	2%	1%	†
Refused	-	-	†	-	-	†
b. You don't want it in your medical records						
Very important	6%	6%	†	7%	6%	†
Somewhat important	6%	2%	†	7%	6%	†
Not too important	9%	18%	†	5%	7%	†
Not a reason at all	76%	66%	†	79%	79%	†
Don't know	3%	8%	†	1%	1%	†
Refused	-	-	†	-	-	†
c. You do not think you are at risk						
Very important	52%	44%	†	59%	56%	†
Somewhat important	14%	21%	†	8%	11%	†
Not too important	6%	5%	†	5%	5%	†
Not a reason at all	25%	29%	†	26%	25%	†
Don't know	3%	2%	†	2%	3%	†
Refused	-	-	†	-	-	†

continued on next page

Q41. THERE ARE A LOT OF REASONS WHY PEOPLE MIGHT NOT GET TESTED FOR STDs OR FOR HIV/AIDS. FOR EACH OF THE FOLLOWING, PLEASE TELL ME HOW IMPORTANT OF A REASON THIS IS FOR YOU?

continued from previous page

Based on those who have not been tested for HIV/AIDS or other STDs

d. You do not want to know

Very important	4%	7%	†	3%	3%	†
Somewhat important	9%	7%	†	9%	7%	†
Not too important	4%	8%	†	1%	4%	†
Not a reason at all	80%	72%	†	84%	83%	†
Don't know	3%	5%	†	3%	2%	†
Refused	-	-	†	-	-	†

e. You do not know where to go to get tested

Very important	5%	5%	†	4%	3%	†
Somewhat important	9%	17%	†	6%	7%	†
Not too important	4%	6%	†	4%	4%	†
Not a reason at all	82%	72%	†	86%	86%	†
Don't know	-	-	†	-	-	†
Refused	-	-	†	-	-	†

f. You do not know what is involved in getting tested

Very important	8%	11%	†	5%	6%	†
Somewhat important	13%	22%	†	8%	9%	†
Not too important	6%	5%	†	7%	6%	†
Not a reason at all	71%	60%	†	77%	77%	†
Don't know	1%	2%	†	2%	1%	†
Refused	*	-	†	1%	1%	†
n	230	77	†	95	161	†

[RANDOMIZE]

Q42. THINKING ABOUT THE MOST RECENT TIME YOU WERE TESTED FOR STDs OR HIV/AIDS, WHAT WAS THE MAIN REASON YOU GOT TESTED? WAS IT BECAUSE [INSERT]?

Based on those who have been tested for HIV/AIDS or other STDs

	TOTAL	AGE			RELATIONSHIP STATUS	
		18-29	30-39	40-49	MARRIED OR LIVING AS MARRIED	SINGLE OR NEVER BEEN MARRIED
You had symptoms	6%	5%	5%	7%	4%	9%
A sexual partner at the time told you he had one or may have been exposed to one	5%	4%	5%	7%	4%	8%
Your health care provider suggested it	8%	7%	7%	10%	7%	11%
It was part of your routine care	21%	23%	23%	16%	22%	19%
You were donating blood	10%	10%	8%	11%	10%	9%
Some other reason	36%	37%	31%	39%	34%	39%
Due to pregnancy [Volunteered]	13%	14%	18%	6%	17%	5%
Marriage license test [Volunteered]	2%	1%	2%	2%	3%	-
Don't know	*	-	-	1%	*	-
Refused	-	-	-	-	-	-
n	560	183	215	162	365	194

Q43. HAS A DOCTOR OR OTHER HEALTH CARE PROVIDER EVER [INSERT]?						
	TOTAL	AGE			RELATIONSHIP STATUS	
		18-29	30-39	40-49	MARRIED OR LIVING AS MARRIED	SINGLE OR NEVER BEEN MARRIED
a. Advised you not to get tested for STDs including HIV/AIDS						
Yes	1%	*	2%	1%	1%	1%
No	99%	100%	98%	99%	99%	99%
Don't know	*	-	*	-	*	-
Refused	-	-	-	-	-	-
b. Told you that you didn't need to worry about an STD including HIV/AIDS						
Yes	6%	6%	7%	7%	6%	8%
No	93%	94%	93%	93%	94%	92%
Don't know	*	-	*	-	*	-
Refused	-	-	-	-	-	-
n	800	261	279	260	531	267

[RANDOMIZE]

Demographics.

Now I have just a few questions so we can describe the people who took part in our survey.

D1. PLEASE TELL ME HOW OLD YOU ARE.			
	TOTAL	RELATIONSHIP STATUS	
		MARRIED OR LIVING AS MARRIED	SINGLE OR NEVER BEEN MARRIED
18-29	33%	24%	50%
30-39	33%	38%	22%
40-49	35%	38%	28%
n	800	531	267

D2. WHAT IS THE LAST GRADE OR CLASS THAT YOU COMPLETED IN SCHOOL?						
	TOTAL	AGE			RELATIONSHIP STATUS	
		18-29	30-39	40-49	MARRIED OR LIVING AS MARRIED	SINGLE OR NEVER BEEN MARRIED
None, or grade 1-8	1%	2%	1%	1%	*	3%
High school incomplete (grades 9-11)	11%	15%	6%	11%	10%	12%
High school graduate (grade 12 or GED certificate)	31%	30%	30%	31%	30%	31%
Business, technical, or vocational school after high school	4%	1%	6%	3%	5%	2%
Some college, no 4-year degree	26%	31%	25%	24%	25%	30%
College graduate (B.S., B.A., or other 4-year degree)	17%	13%	19%	18%	20%	10%
Post-graduate training or professional schooling after college	10%	8%	11%	11%	10%	11%
Refused	*	-	1%	1%	*	1%
n	800	261	279	260	531	267

D3. ARE YOU MARRIED, LIVING WITH A PARTNER, DIVORCED, SEPARATED WIDOWED, OR HAVE YOU NEVER BEEN MARRIED?

	TOTAL	AGE			RELATIONSHIP STATUS	
		18-29	30-39	40-49	MARRIED OR LIVING AS MARRIED	SINGLE OR NEVER BEEN MARRIED
Married	56%	34%	68%	65%	84%	-
Living with a partner	10%	14%	10%	8%	16%	-
Divorced	10%	4%	9%	17%	-	29%
Separated	2%	2%	3%	3%	-	7%
Widowed	1%	1%	1%	1%	-	4%
Never been married	20%	45%	9%	6%	-	60%
Refused	*	*	-	*	-	-
n	800	261	279	260	531	267

D4. COUNTING YOURSELF, HOW MANY ADULTS 18 AND OLDER CURRENTLY LIVE IN YOUR HOUSEHOLD?

	TOTAL	AGE			RELATIONSHIP STATUS	
		18-29	30-39	40-49	MARRIED OR LIVING AS MARRIED	SINGLE OR NEVER BEEN MARRIED
1	18%	16%	18%	20%	2%	49%
2	62%	56%	70%	60%	82%	23%
3	13%	15%	10%	14%	11%	18%
4 or more	7%	13%	1%	6%	5%	11%
Refused	*	-	-	*	-	-
n	800	261	279	260	531	267

D5. AND NOW THINKING ABOUT CHILDREN, HOW MANY CHILDREN UNDER THE AGE OF 18 CURRENTLY LIVE IN YOUR HOUSEHOLD?

	TOTAL	AGE			RELATIONSHIP STATUS	
		18-29	30-39	40-49	MARRIED OR LIVING AS MARRIED	SINGLE OR NEVER BEEN MARRIED
0	36%	39%	25%	43%	29%	49%
1	26%	31%	21%	24%	26%	25%
2	24%	20%	31%	22%	28%	17%
3	9%	6%	15%	7%	11%	5%
4 or more	5%	3%	9%	3%	5%	4%
Refused	*	-	-	*	-	-
n	800	261	279	260	531	267

D6. ARE YOU YOURSELF OF LATINO OR HISPANIC ORIGIN OR DESCENT, SUCH AS MEXICAN, PUERTO RICAN, CUBAN, OR SOME OTHER LATIN AMERICAN BACKGROUND?

	TOTAL	AGE			RELATIONSHIP STATUS	
		18-29	30-39	40-49	MARRIED OR LIVING AS MARRIED	SINGLE OR NEVER BEEN MARRIED
Yes	14%	19%	18%	4%	14%	13%
No	86%	81%	82%	95%	86%	87%
Don't know	*	*	-	-	-	*
Refused	*	-	-	*	-	-
n	800	261	279	260	531	267

D7. WHAT IS YOUR RACE? ARE YOU WHITE, AFRICAN AMERICAN, ASIAN, OR SOME OTHER RACE?

	TOTAL	AGE			RELATIONSHIP STATUS	
		18-29	30-39	40-49	MARRIED OR LIVING AS MARRIED	SINGLE OR NEVER BEEN MARRIED
White/White Latino	76%	72%	72%	82%	80%	69%
African American/Black/Black Latino	14%	16%	15%	11%	10%	21%
Asian	3%	5%	2%	2%	2%	4%
Other	6%	7%	7%	5%	7%	5%
Don't know	1%	-	2%	-	1%	-
Refused	1%	*	2%	1%	1%	1%
n	800	261	279	260	531	267

COMBINED RACE/ETHNICITY BASED ON D6 AND D7.

	TOTAL	AGE			RELATIONSHIP STATUS	
		18-29	30-39	40-49	MARRIED OR LIVING AS MARRIED	SINGLE OR NEVER BEEN MARRIED
White, non-Hispanic	67%	59%	64%	79%	71%	61%
African American, non-Hispanic	13%	15%	14%	10%	9%	19%
Latino	14%	19%	18%	4%	14%	13%
Asian	3%	4%	2%	2%	2%	4%
Other	3%	3%	2%	5%	3%	3%
Refused	0%	0%	0%	1%	0%	0%
n	800	261	279	260	531	267

D8. LAST YEAR, THAT IS IN 2001, WHAT WAS YOUR FAMILY'S TOTAL INCOME FROM ALL SOURCES, BEFORE TAXES? JUST STOP ME WHEN I GET TO THE RIGHT CATEGORY.

	TOTAL	AGE			RELATIONSHIP STATUS	
		18-29	30-39	40-49	MARRIED OR LIVING AS MARRIED	SINGLE OR NEVER BEEN MARRIED
Less than \$20,000	11%	16%	5%	11%	6%	20%
\$20,000 to under \$30,000	12%	16%	13%	7%	10%	15%
\$30,000 to under \$50,000	24%	22%	24%	26%	24%	24%
\$50,000 to under \$75,000	23%	18%	22%	28%	28%	13%
\$75,000 to under \$100,000	10%	8%	15%	8%	12%	6%
\$100,000 to under \$200,000	9%	5%	10%	11%	11%	4%
\$200,000 to under \$300,000	1%	*	1%	1%	1%	*
\$300,000 or more	1%	*	1%	1%	1%	1%
Don't know	6%	14%	2%	2%	2%	14%
Refused	4%	1%	6%	5%	4%	3%
n	800	261	279	260	531	267



**The Henry J. Kaiser
Family Foundation**
2400 Sand Hill Road
Menlo Park, CA 94025
Phone: 650-854-9400
Fax: 650-854-4800

Washington Office:
1330 G Street, NW
Washington, DC 20005
Phone: 202-347-5270
Fax: 202-347-5274

www.kff.org

Individual copies of this publication (#3341) are available on the Kaiser Family Foundation's website at www.kff.org.

The Kaiser Family Foundation is an independent, national health philanthropy dedicated to providing information and analysis on health issues to policymakers, the media, and the general public. The Foundation is not associated with Kaiser Permanente or Kaiser Industries.